



Installation Instructions

D760-0066:

A90 Supra / G29 Z4 (4 CYL)

COLD AIR INTAKE SYSTEM

Document Revision: A

Release Date: December 01, 2022

Thank you for being selective enough to choose a Dinan Performance Intake System. The Dinan Engineering Team has spent many hours developing this product to assure that you will receive increased performance, durability and an aesthetic design that you as a customer will be able to enjoy for many years. Ease of installation and maintenance is important to us and has been highly considered throughout the design process.

Prior to performing the installation, familiarize yourself with these instructions as it should help you with the process. If you feel that you do not have the required skills or tools, please arrange for a qualified repair facility to perform the installation.

If you have any difficulties during the installation, or if these instructions are not clear to you, please call Dinan's Technical Support Staff at (800) 341-5480.

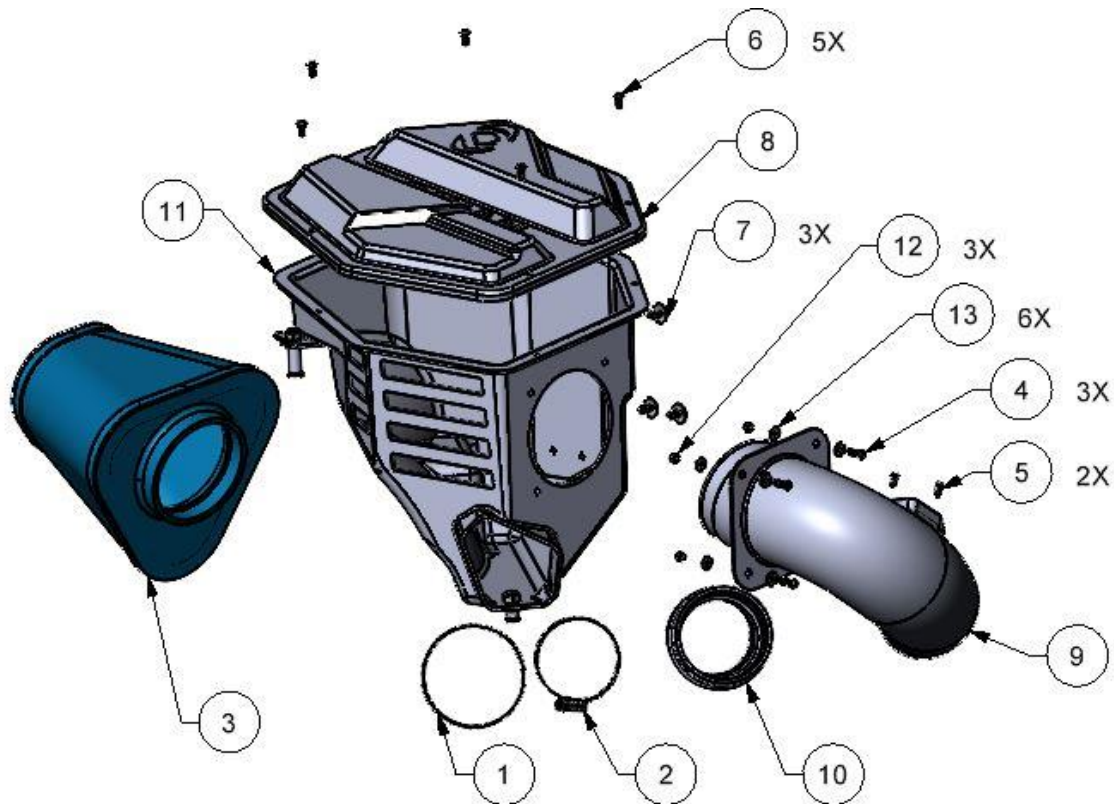
Again, thank you for choosing Dinan. Enjoy.

Table of Contents

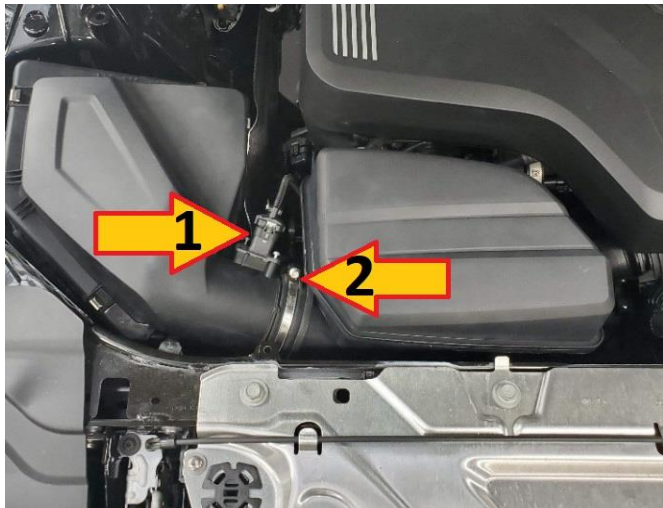
PARTS LIST	2
REMOVAL OF STOCK SYSTEM	3
DINAN INSTALLATION.....	5

PARTS LIST

ITEM NO.	DINAN Part No	DESCRIPTION	QTY.
1	#36Z	Clamp 9mm, 70-90	1
2	#42	Clamp, 9mm, 60-80	1
3	D401-0027	Air Filter	1
4	D671-0143	M4x16x0.7P Button Head, SS	3
5	D671-0147	M4 x 10 x 0.7P Button Head, SS	2
6	D671-0236	Rivet, Push-in Click Lock, Black	10
7	D671-0244	Rivet, Push in Ribbed, Black	3
8	D762-0292	Airbox Lid, A90	1
9	D762-0296	Intake Tube, A90, 4cyl	1
10	D762-0297	Turbo Inlet, A90, 4cyl	1
11	D763-0194	Assy, Lower Airbox, A90, 4-cyl	1
12	M4 NYLOK	M4x0.7P Nylok Nut	3
13	M4X12 FENDER	M4 Washer	6



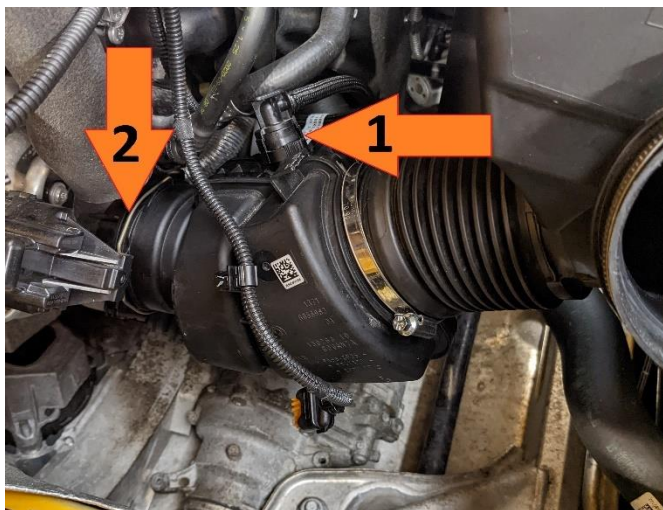
REMOVAL OF STOCK SYSTEM



STEP 1:

1. Unplug the sensor harness from the airbox
2. Loosen clamp and remove the airbox from the vehicle

Ensure that the rubber mounting grommets from the airbox remain in proper location of vehicle.



STEP 2:

1. Disconnect plug as shown
2. Pull retaining clip out so that it no longer engaged to the turbo housing

Remove remaining stock system from vehicle.

With a cloth, protect the turbo opening so that no debris falls inside.



STEP 3:

Remove the sensor from the airbox.

The sensor will be re-used. The screws will not.

DINAN INSTALLATION



STEP 1:

Loosely place the smaller clamp over the smaller opening of the rubber hose.

The smaller opening of the rubber hose has a lip feature that shall snap over the first lip of the stock turbo inlet pipe.

Once positioned, orient the hose so the natural bend faces upward.



STEP 2:

Once positioned and oriented properly, tighten the smaller clamp

Loosely place larger hose clamp in proper position. Do not tighten at this time.

**STEP 3:**

Position the sensor on the inlet tube. This will only fit in one direction.

Use the M4x10 (2) screws and tighten sensor to inlet tube as shown

**STEP 4:**

The kit is supplied with 3 ribbed press rivets. If desired, press these into the box as shown

**STEP 5:**

Using the hardware shown below, mount the inlet tube to the airbox housing and tighten

Screw – Washer – Washer – Nut

6x M4 Washers

3x M4 Lock Nuts

3x M4x16 Bolts



**STEP 6:**

The filter shall have a supplied clamp in the box.

Slide the filter over the tube and proceed to STEP 7

**STEP 7:**

Ensure that the filter is in the correct orientation. The DINAN logo shall be upright when looking at the filter cap.

Double check proper orientation by placing lid on box to ensure the filter does not interfere.

Tighten the Clamp

**STEP 8:**

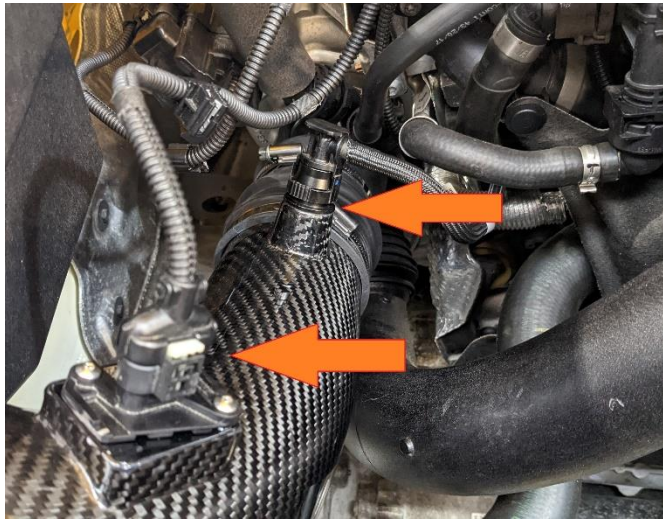
Place the assembled intake into the vehicle.

Slide inlet tube into rubber hose

Snap the airbox into the rubber grommets to fully seat system

The inlet tube shall protrude far enough into hose so that there is plenty of engagement of the clamp

Tighten the Clamp



STEP 9:

Re-attach both plugs to the inlet tube locations as shown

Ensure proper engagement



STEP 9:

Using the push rivets (5x), mount the lid to the lower box.

Ensure proper engagement

THE INSTALLATION IS NOW COMPLETE. ENJOY