



MIDDLE EXHAUST INSTALLATION INSTRUCTIONS

PART NUMBER D660-0080

APPLICATION: 2018-23 G30 M550i xDrive

Congratulations for being selective enough to use a Dinan Middle Exhaust. We have spent many hours developing this kit to assure that you will receive maximum performance and durability with minimum difficulty in installation. Please take the time to read these instructions and call us if you have any difficulties during the installation.

Please take the time to read these instructions thoroughly before proceeding. When performing the installation, read the entire numbered instruction before working on the car. If you feel that you do not have the requisite skill, please arrange for a qualified repair facility to perform the installation.

If you have any difficulties during the installation, or if these instructions are not clear to you, please call Dinan's Technical Support Staff at (800) 341-5480.

Note: If the car has been driven recently, it's best to let the exhaust cool down to avoid possible burns while installing the Dinan Middle Exhaust.

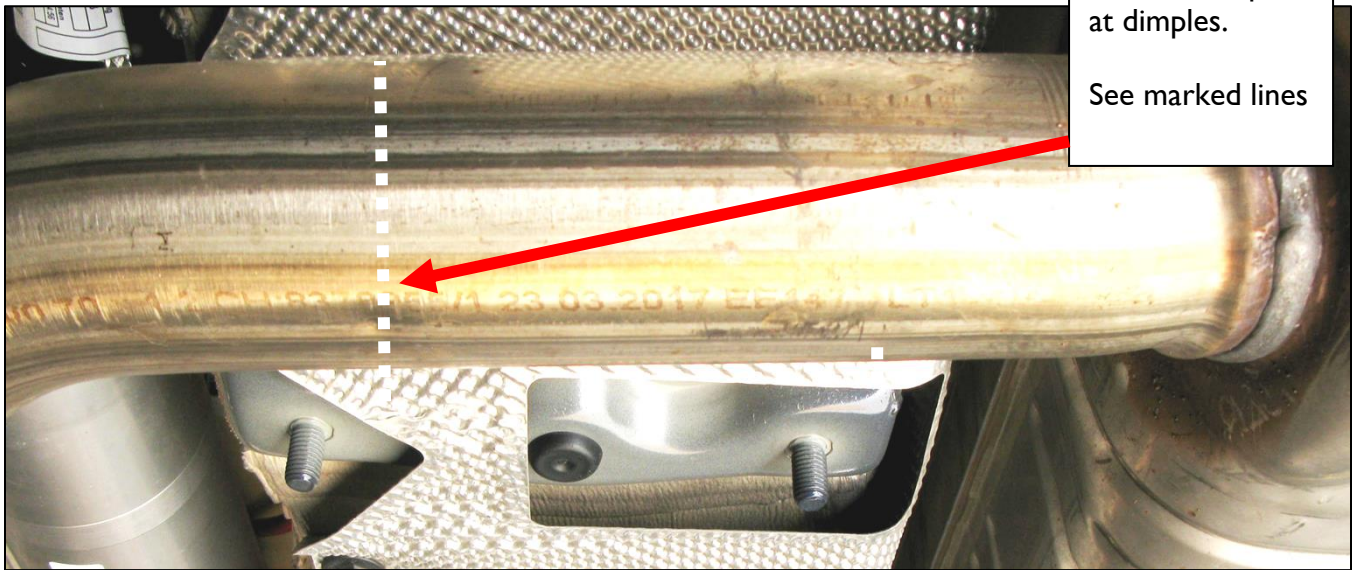
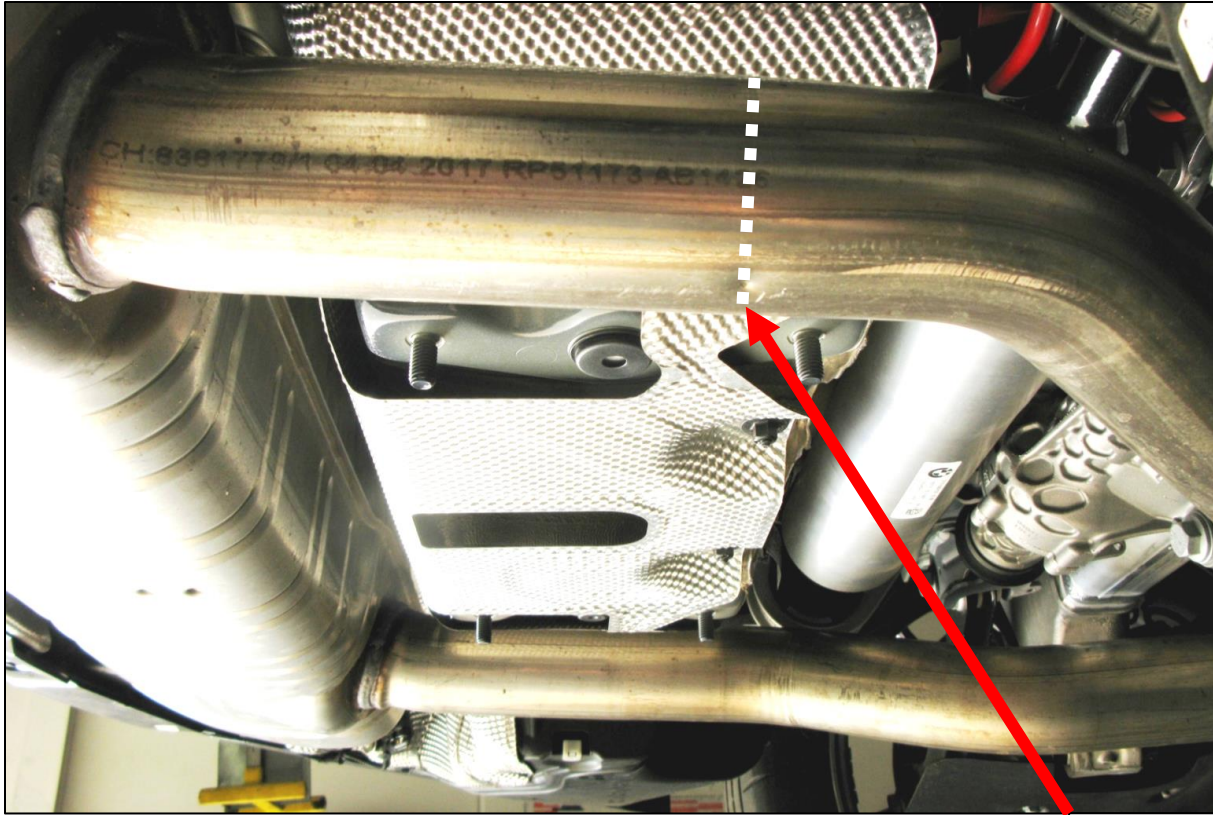
PARTS LIST

Qty	Part #	Description
1	D662-0570	Inlet Assembly; Right
1	D662-0571	Inlet Assembly; Left
1	D662-0572	Rear Section
1	D663-0343	Hardware Kit

INSTALLATION:

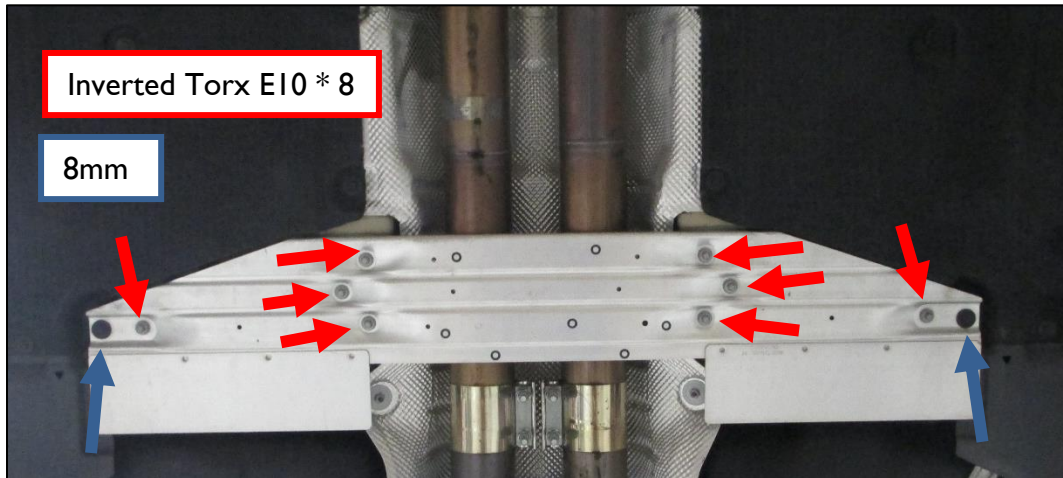
Note: If the vehicle is already equipped with a Dinan Freeflow Exhaust, please skip ahead to Step 2. If the vehicle has a stock muffler, then continue with Step 1.

- I. **For vehicles with a stock muffler only:** Support the muffler securely with a jack or a stand, then cut the stock inlet pipes at the BMW cut dimple locations as shown in the figures below.

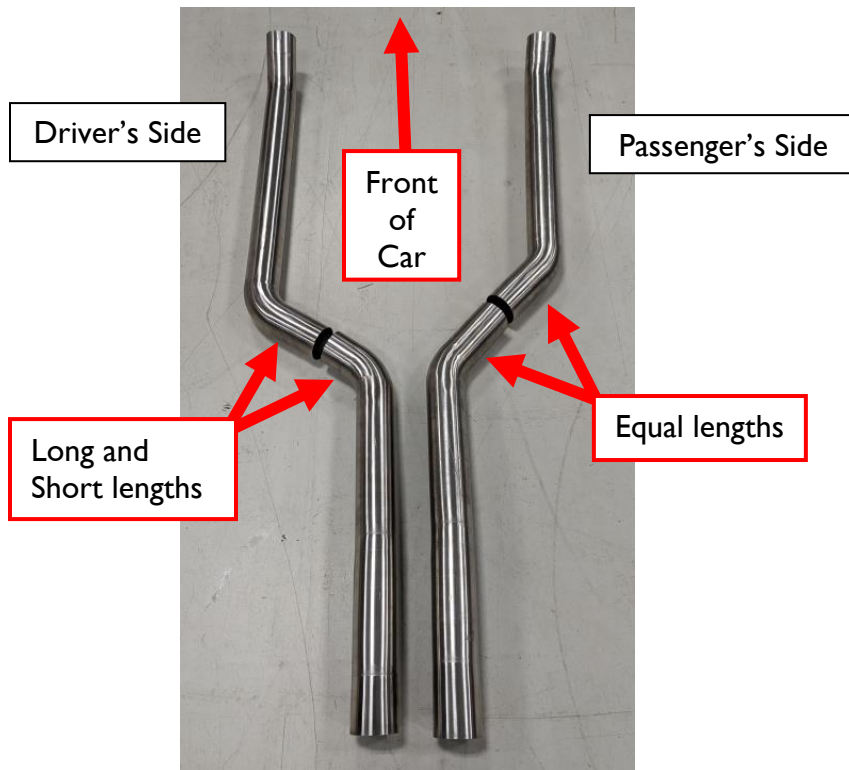


Cut tubes square at dimples.
See marked lines

2. Remove the center brace in the middle of the car. There are eight bolts that use an Inverted Torx E10 * 8, and two 8mm bolts holding the center brace in place.



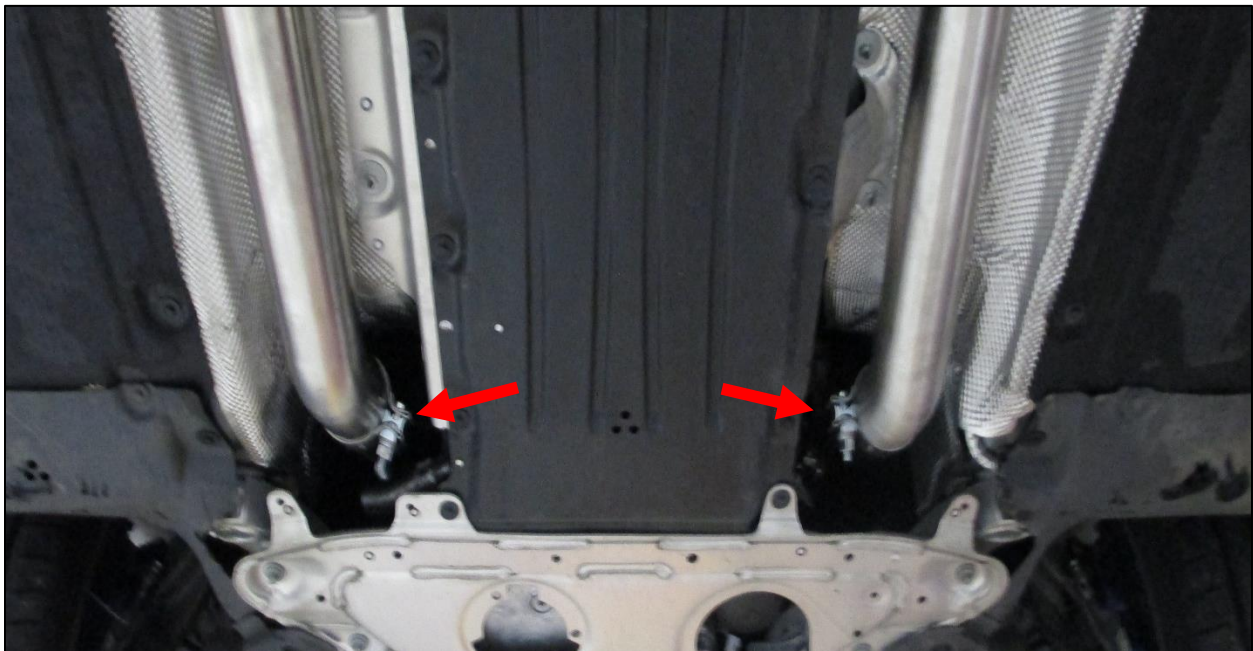
3. Unbolt and remove the stock middle exhaust from the car. Leave the rear muffler in place, attached to the car. Set any hardware aside, as they will be reused.
4. Lay out the inlet pipes of the Dinan Middle Exhaust as shown below. The sections of each inlet pipe will be joined using the supplied double clamps.



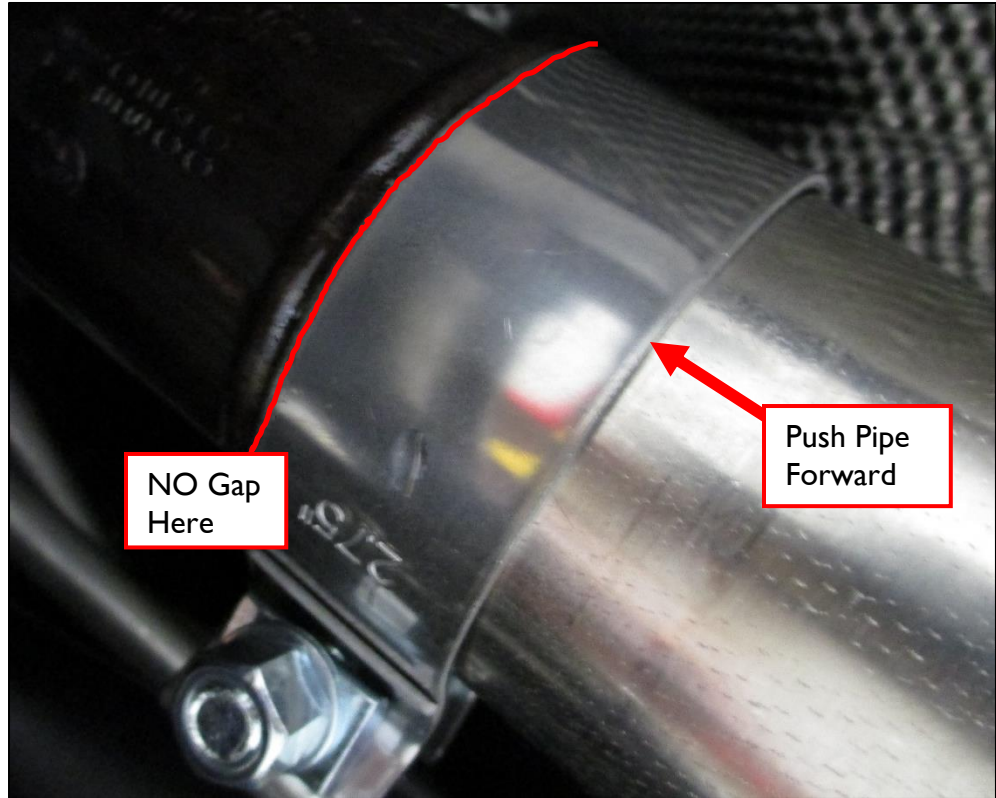
5. Slip a Dinan single bolt clamp onto the front end of each inlet pipe. Locate the clamp flush with the end of the pipe, with the bolt on the inside, and the nut facing down (see next two photos).



6. Lift inlet pipes into the vehicle, making sure the clamp hardware is on the inside, to avoid contact with the body.

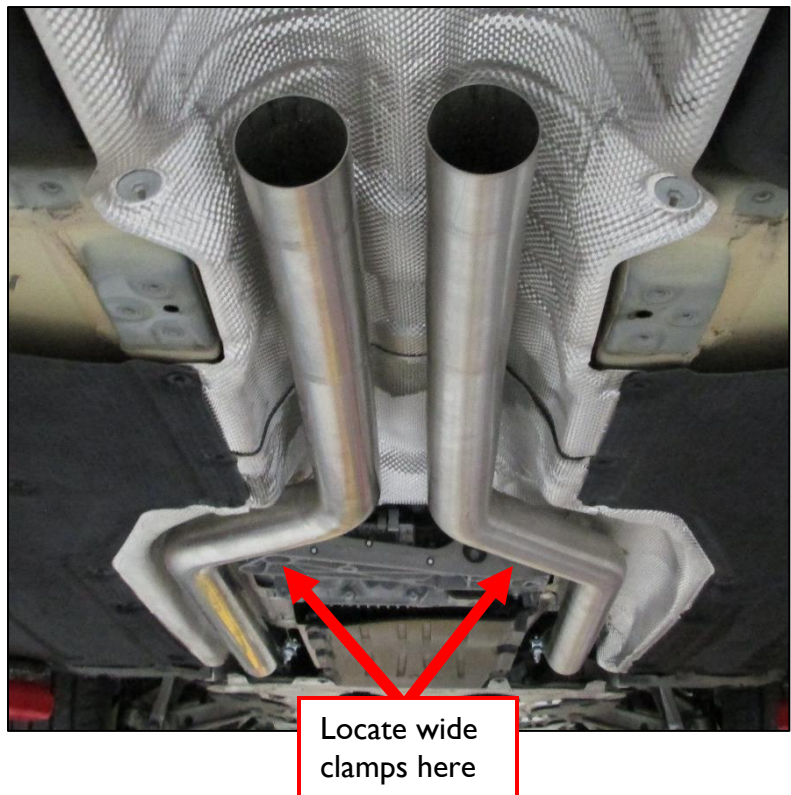


7. Push each pipe forward up against the lip, so that there is NO gap between the Dinan pipe, and the outlet from the engine.



8. Join the rear sections of the two inlet pipes using the supplied wide clamps, arranging the clamp hardware to avoid contact with the body.

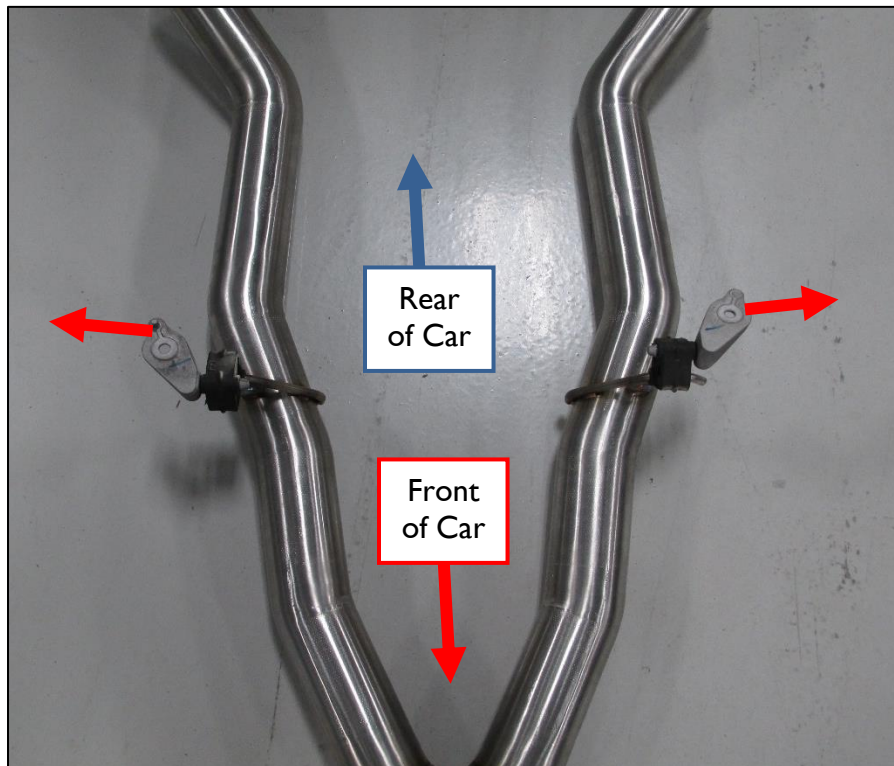
Tighten the clamps just enough to hold the pipes into place, but still allow some adjustment. Rotate the pipes until the preferred position is attained.



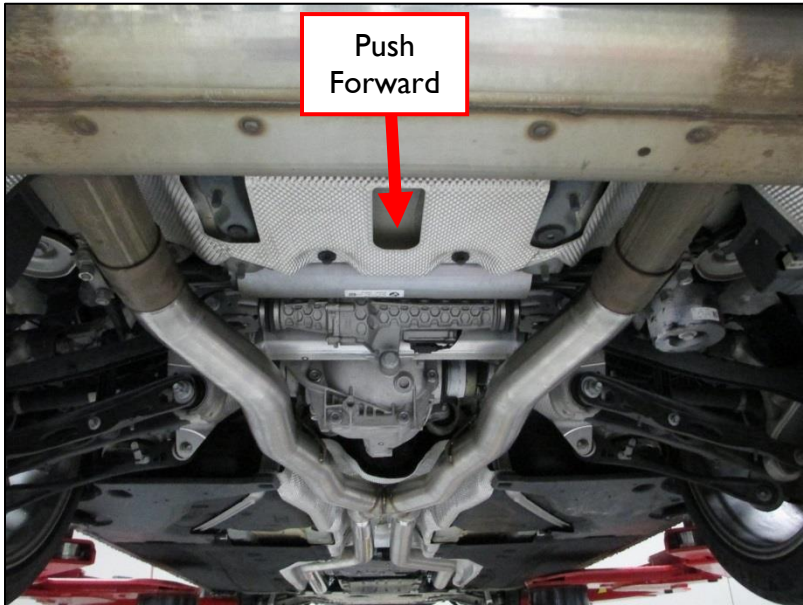
9. Slide the remaining Dinan double clamps onto the inlet pipes, with the hardware towards the middle of the car, as shown below.



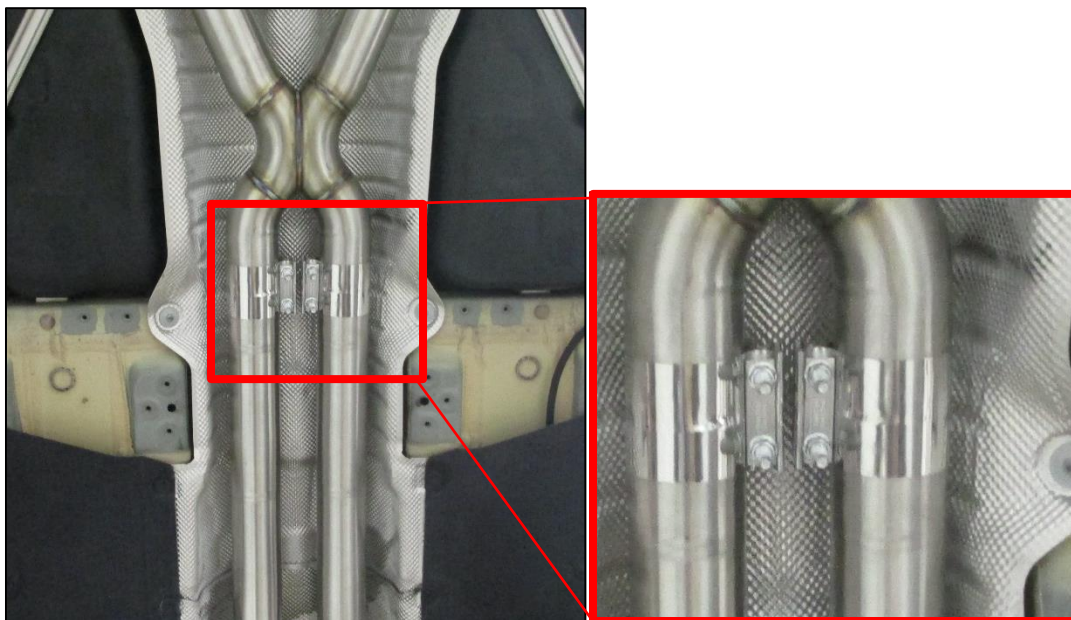
10. Carefully remove the hangers from the stock exhaust and transfer them onto the new Dinan rear section. Make sure the “fins” of the hangers are pointed outward, as shown below.



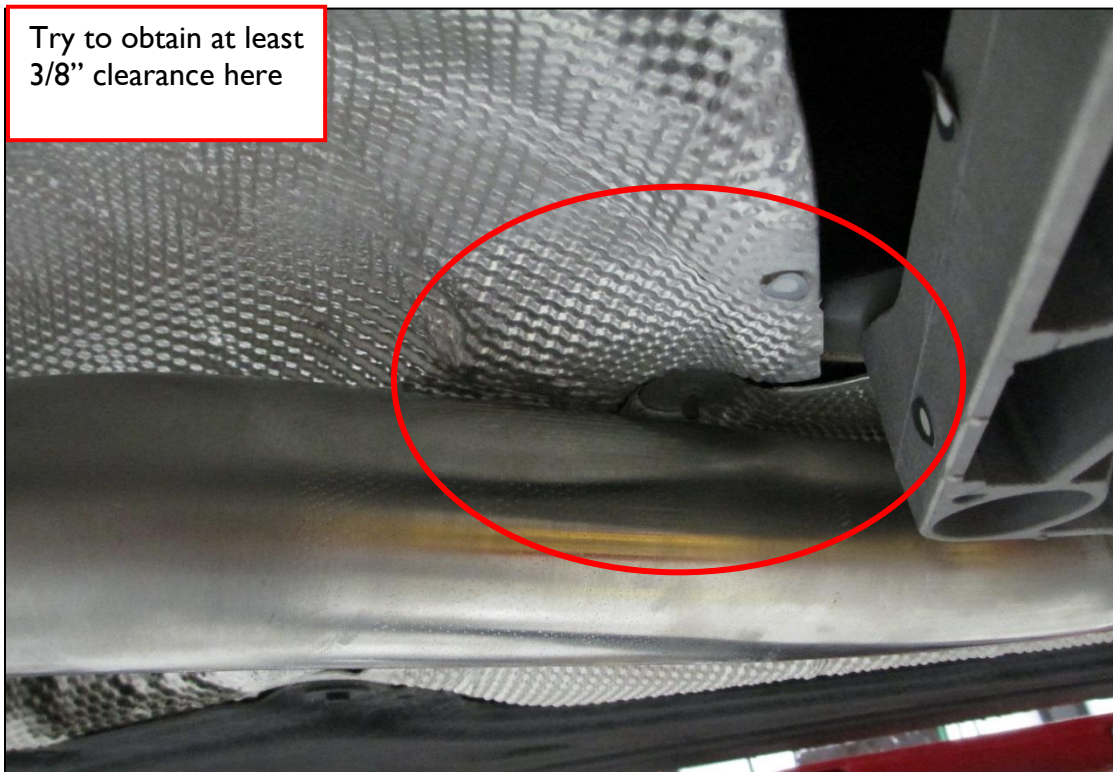
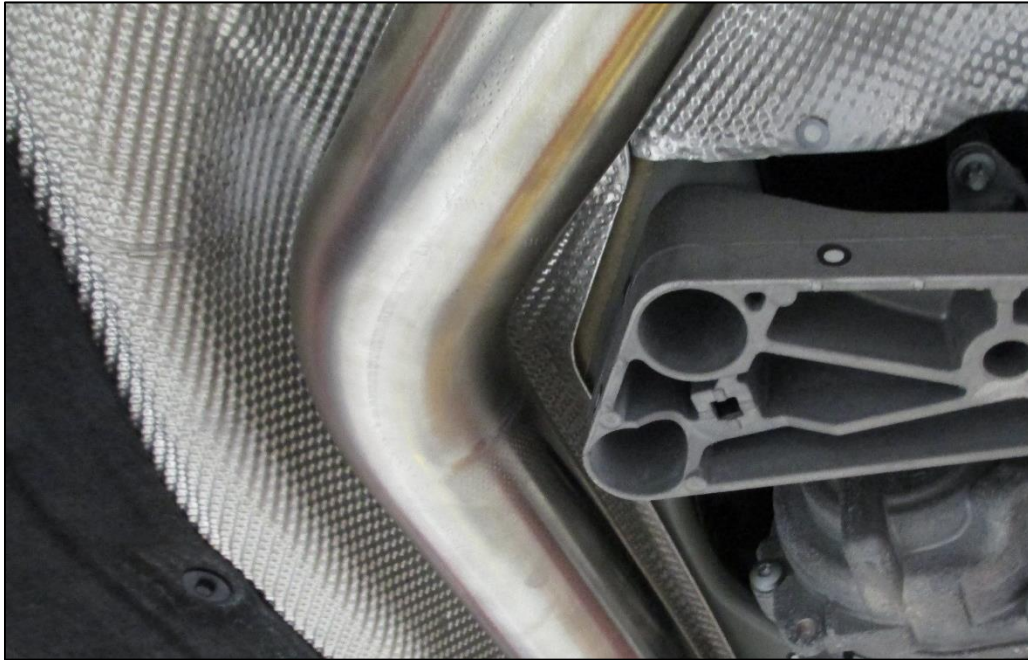
11. Lift the Dinan rear section into vehicle and attach the hangers to the car using the hardware previously removed.
12. Slide both rear muffler clamps and both inlet clamps onto the rear section and lightly tighten them. Now push the entire exhaust system forward, and snug all clamps to hold in place. Do not fully tighten the clamps yet.



13. For best performance, center the two middle clamps evenly onto the inlet pipes, and the rear section pipes as shown.



14. The driver's side inlet pipe requires additional attention. There is minimal clearance between the pipe and the underside of the car, near the transmission brace. Adjust the pipe to maximize the clearance in this area, as shown in the following photos.



15. When satisfied with the fit, fully tighten all clamps, starting at the front, and working your way to the rear, making any final adjustments as needed.

16. Reinstall the center brace.

17. Installation is now complete. Happy motoring!