



## Installation Instructions

**D180-0015 & D180-0015-B:**

**G8x M2/M3/M4**

**Engine Strut Brace**

**Document Revision: C**

**Release Date: October 28, 2023**

### Table of Contents

PARTS LIST .....	2
REMOVAL OF STOCK SYSTEM .....	2
DINAN INSTALLATION.....	3

Thank you for being selective enough to choose a Dinan Enhanced Engine Strut Brace. The Dinan Engineering Team has spent many hours developing this product to assure that you will receive increased performance, durability and an aesthetic design that you as a customer will be able to enjoy for many years. Ease of installation and maintenance is important to us and has been highly considered throughout the design process.

Prior to performing the installation, familiarize yourself with these instructions as it should help you with the process. If you feel that you do not have the required skills or tools, please arrange for a qualified repair facility to perform the installation.

If you have any difficulties during the installation, or if these instructions are not clear to you, please call Dinan's Technical Support Staff at (800) 341-5480.

Again, thank you for choosing Dinan. Enjoy.

## PARTS LIST

DINAN PART #	DESCRIPTION	QUANTITY
D183-0073	ASSY, STRUT BRACE, G8X	1
	OR	
D183-0073-MT	STRUT BRACE, CF SINGLE PIECE, MATTE	1
D672-0008	M8 RECESS FLANGE NUT	8

## REMOVAL OF STOCK SYSTEM



### STEP 1:

Remove front and rear brace by removing (1) bolt and (8) nuts.

For M2 only – remove edge seal and cosmetic covers as needed to access rear brace fasteners.

## DINAN INSTALLATION



### STEP 1:

**\*\*The vehicle must be fully on the ground\*\***

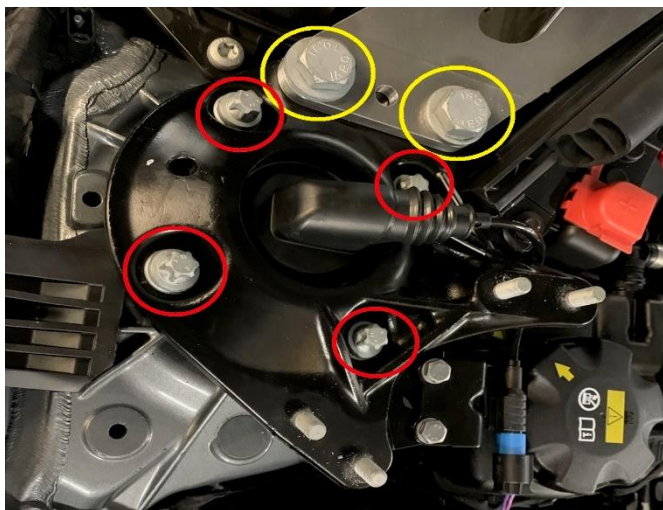
Place DINAN engine strut brace into position. Secure into place using the stock front bolt, and Dinan-supplied recess nuts.

Go to STEP 2 if brace is hard to fit.

### TIGHTENING TORQUE:

M10x35 Screw (1): Torque to 56Nm (41 ft-lb)

M8 Nut (8): Torque to 28Nm (20 ft-lb)



### STEP 2:

If the brace does not slide over the studs, adjustment may be needed on both left and right side of the spring strut support hat. These parts do have some slop and may vary from vehicle to vehicle. This support is not coupled with the suspension and will NOT affect alignment.

Loosen all bolts shown.

Adjust until the brace slides over the studs.

**STEP 3:**

Loosely put the nuts back on and adjust the support hat so the brace studs align better (more concentric) with the nuts.

Re-torque support hat bolts:

Red: 28 Nm (20 ft-lb), Angle of Rotation 120°

Yellow: 56 Nm (41 ft-lb)

Torque the brace down as shown in STEP 1.

**ENJOY.**