



INSTALLATION INSTRUCTIONS

PART NUMBER D440-0047

APPLICATION: 2017-20 BMW F22 M240i & xDrive
2017-20 BMW F22 230i & xDrive
2017-20 BMW F23 M240i & xDrive Convertible
2017-20 BMW F23 230i & xDrive Convertible
2016-18 BMW F30 340i & xDrive
2017-19 BMW F34 340i xDrive GT
2016-20 BMW F30 330i & xDrive
2017-20 BMW F31 330i xDrive Wagon
2017-19 BMW F34 330i xDrive GT
2017-20 BMW F32 440i & xDrive
2017-20 BMW F32 430i & xDrive
2017-20 BMW F33 440i & xDrive Convertible
2017-20 BMW F33 430i & xDrive Convertible
2017-20 BMW F36 440i & xDrive Gran Coupe
2017-20 BMW F36 430i & xDrive Gran Coupe
2017-20 BMW G30 540i & xDrive
2017-20 BMW G30 530i & xDrive
2018-19 BMW G32 640i xDrive GT
2016-20 BMW G11 740i & xDrive
2020-21 BMW G29 Z4 sDrive M40i
2018-20 BMW G01 X3 sDrive 30i
2018-20 BMW G01 X3 xDrive 30i
2018-20 BMW G01 X3 M40i
2019-20 BMW G02 X4 xDrive 30i
2019-20 BMW G02 X4 M40i
2019-20 BMW G05 X5 sDrive 40i
2019-20 BMW G05 X5 xDrive 40i
2020 BMW G06 X6 sDrive 40i
2020 BMW G06 X6 xDrive 40i
2019-21 BMW G07 X7 xDrive 40i

PARTS LIST

Qty	Part #	Description
1	D443-0119	DT SPORT Module
7		Zip ties

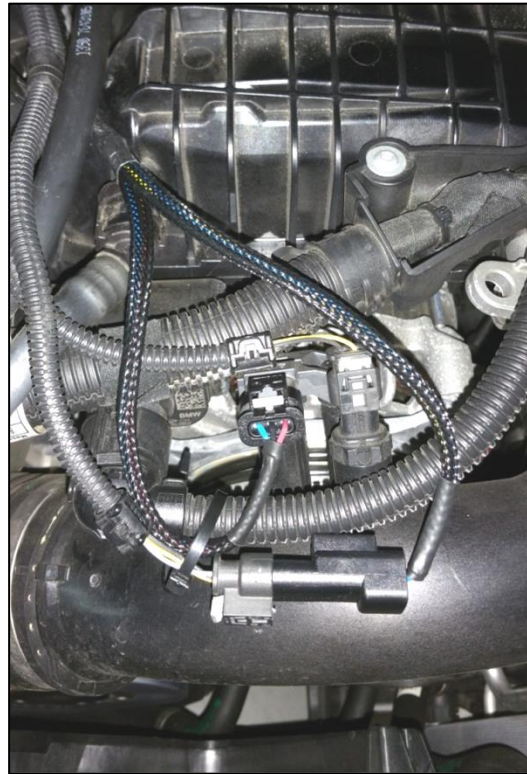
Congratulations for being selective enough to use DINANTronics SPORT Performance Tuner. We have spent many hours developing this kit to assure that you will receive maximum performance and durability with minimum difficulty in installation. Please take the time to read these instructions and call us if you have any difficulties during the installation.

INSTALLATION:

1. Make sure ignition is OFF.
2. The DINANTronics SPORT module is identified with a MAC address. Please note the last 4 characters. This will be needed by the optional smart phone app to establish a connection. The app allows live boost monitoring, as well as the ability to switch performance modes. The app is not needed to realize performance gains from DINANTronics SPORT.
3. Remove the engine cover by pulling upward.
4. Referring to the photo below, identify the pressure sensor mounted to the intake charge pipe, at the front of the engine.
 - The sensor has a 3-pin connection, and matches the 3-pin connectors (with black heat shrink) on the DINANTronics SPORT harness.



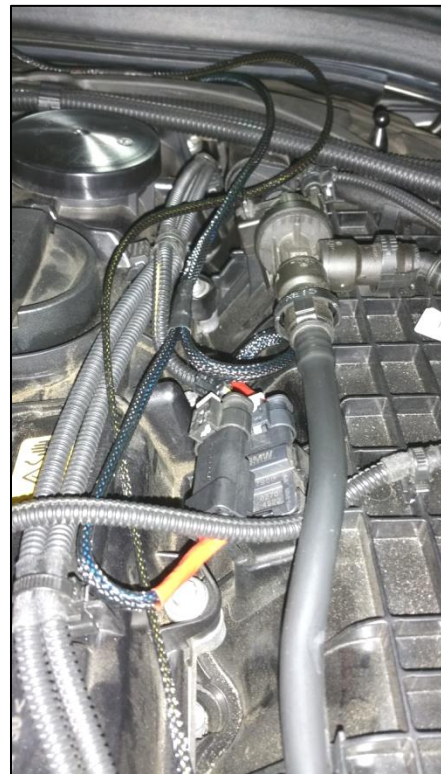
5. Disconnect the factory wiring harness from the pressure sensor. You may wish to study the locking system on the new DINANTronics SPORT connectors until you are familiar with how the two connector halves are released. Some locks will require the use of a small flat blade screwdriver to release the tang.
6. See photo. Install the DINANTronics SPORT connectors in between the sensor, and the factory wiring harness. The connectors can only be installed one way. Make sure that the locking tangs on both connections are secure.



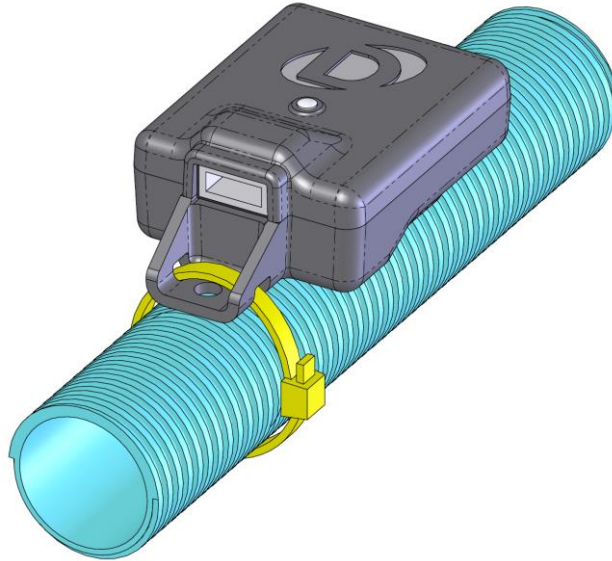
7. Referring to the photo below, locate the pressure sensor installed on the intake manifold, near the center-top of the engine.
 - The sensor has a 4-pin connection, and matches the 4-pin connectors (with red heat shrink) on the DINANTronics SPORT harness.



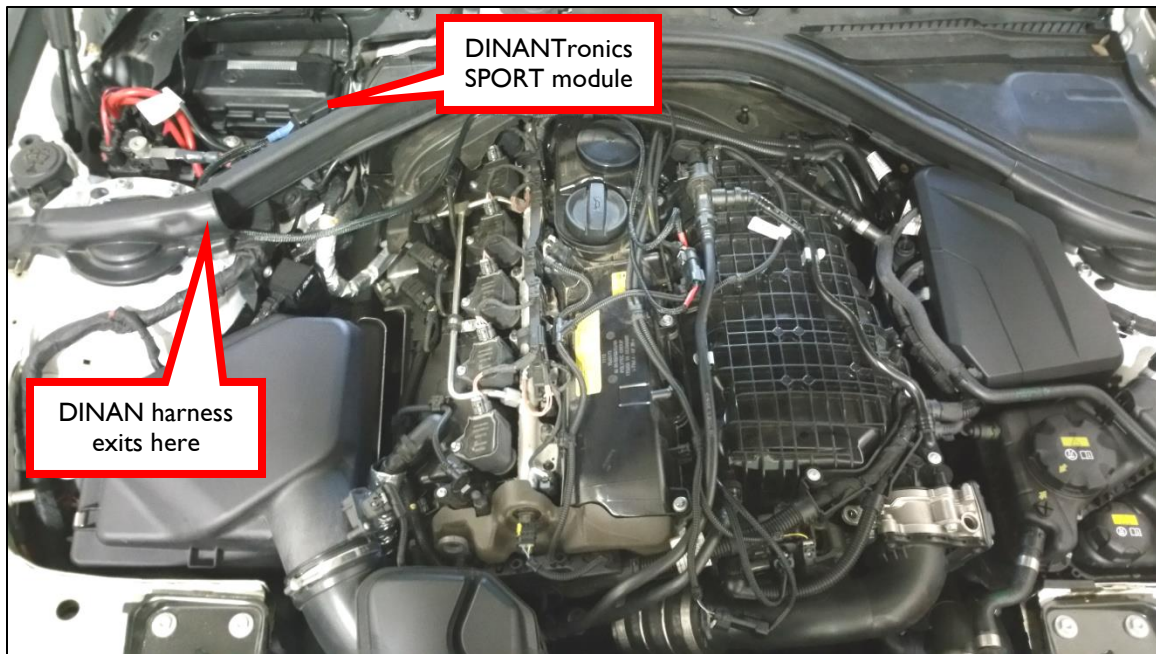
8. Disconnect the factory wiring harness from the intake manifold pressure sensor. You may wish to study the locking system on the new DINANTronics SPORT connectors until you are familiar with how the two connector halves are released. Some locks will require the use of a small flat blade screwdriver to release the tang.
9. See photo. Install the DINANTronics SPORT module in between the sensor, and the factory wiring harness. The connectors can only be installed one way. Make sure that the locking tangs on both connections are secure.

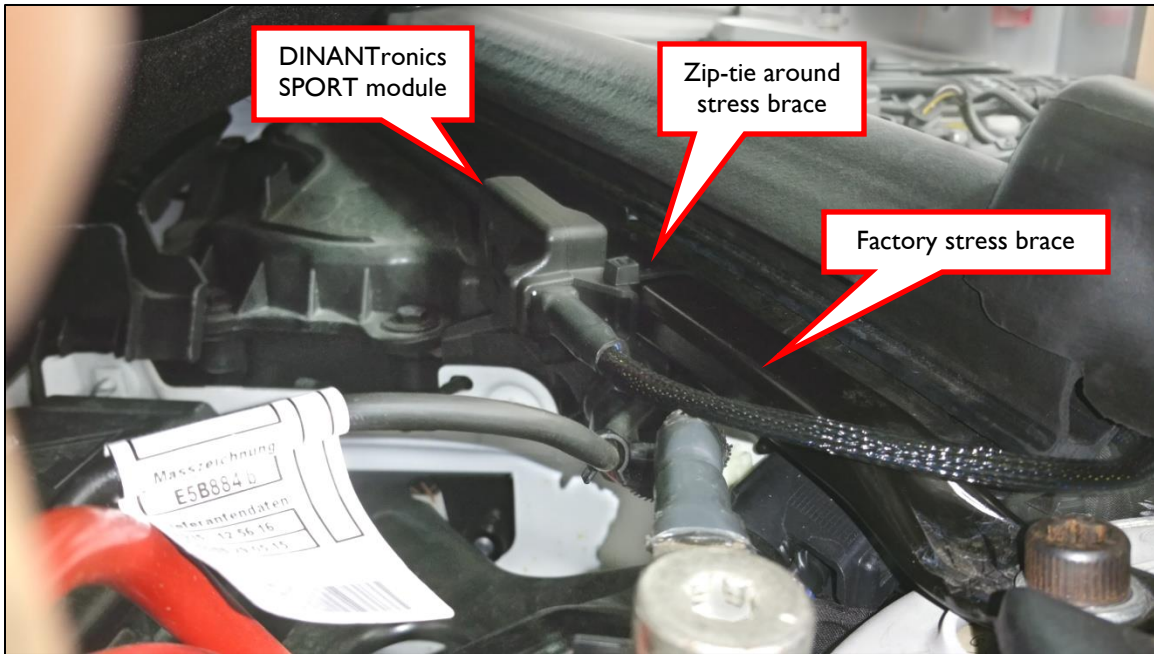


10. The SPORT module is secured using the included zip-ties. Please note -- DO NOT route the zip-tie over the harness at the SPORT module, as this could stress the internal circuit board and damage the module! Only insert a zip-tie thru the slots on the SPORT module as shown below.

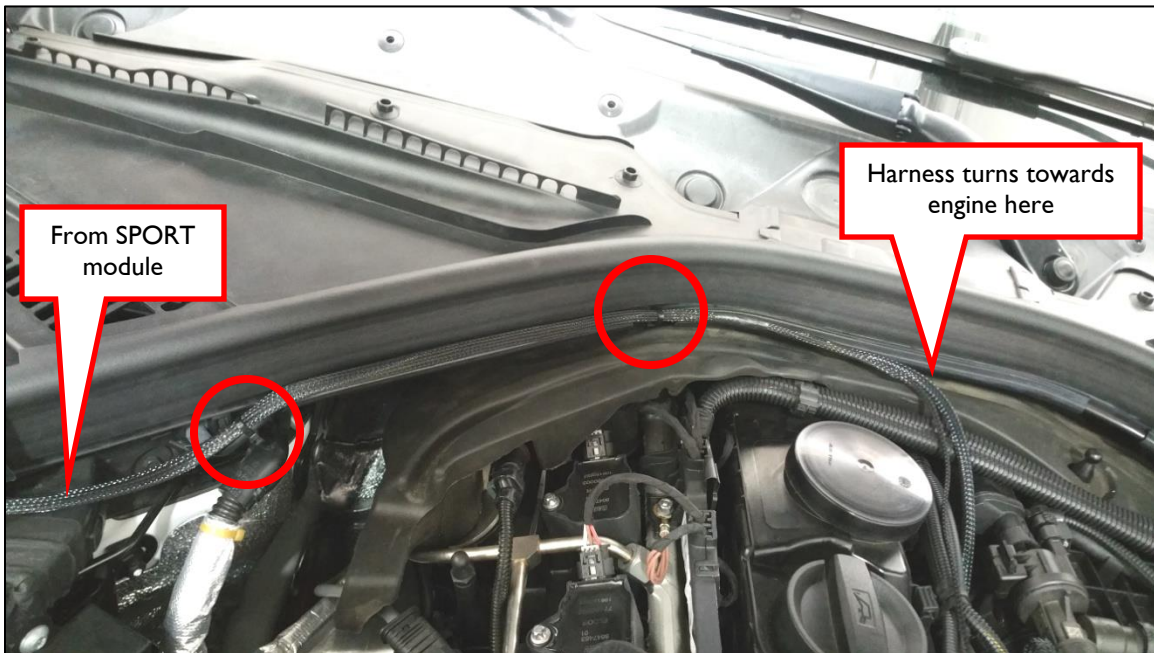


11. Keeping in mind the previous step, mount the module in the compartment shown in the photos below, attaching it to the factory stress brace.





12. Route the harness as shown below, and use zip-ties to secure the wiring harness. Ensure adequate slack in the wiring harness to allow for engine movement.



13. Reinstall the engine cover.

14. Turn on the ignition, but do not start the engine. The LED on the SPORT module will illuminate.
15. The module has 5 settings -- in order of increasing performance, they are: VALET, STOCK, SPORT, SPORT+, and RACE. The modules are shipped in SPORT+ mode. The setting can be changed with the DINANTronics SPORT app (available from iTunes or the Google Play store).



16. Connect to your phone or tablet to your module using the app. Note that your device must be equipped with Bluetooth version 4.0.

** If you experience issues with Bluetooth communication, you may wish to relocate the SPORT module closer to the passenger compartment, and/or further away from sources of electrical noise, such as the alternator and electric fans.

17. Adjust module for the desired level of performance. Your setting will be retained, so adjustment is not necessary at each engine start.

18. Enjoy!