

Thank you for being selective enough to choose a Dinan Performance Exhaust System. The Dinan Engineering Team has spent many hours developing this product to assure that you will receive increased performance, durability and an aesthetic design that you as a customer will be able to enjoy for many years. Ease of installation and maintenance is important to us and has been highly considered throughout the design process.

Prior to performing the installation, familiarize yourself with these instructions as it should help you with the process. If you feel that you do not have the required skills or tools, please arrange for a qualified repair facility to perform the installation.

If you have any difficulties during the installation, or if these instructions are not clear to you, please call Dinan's Technical Support Staff at (800) 341-5480.

Again, thank you for choosing Dinan. Enjoy.

Installation Instructions

D660-0085 / D660-0085-BLK

EXHAUST SYSTEM

Vehicle Application List:

2020-23	G20 M340i & xDrive
2021-23	G22 M440i & xDrive
2021-23	G23 M440i & xDrive Convertible
2021-23	G26 M440i & xDrive Gran Coupe

Document Revision: F
Release Date: August 21, 2023

Table of Contents

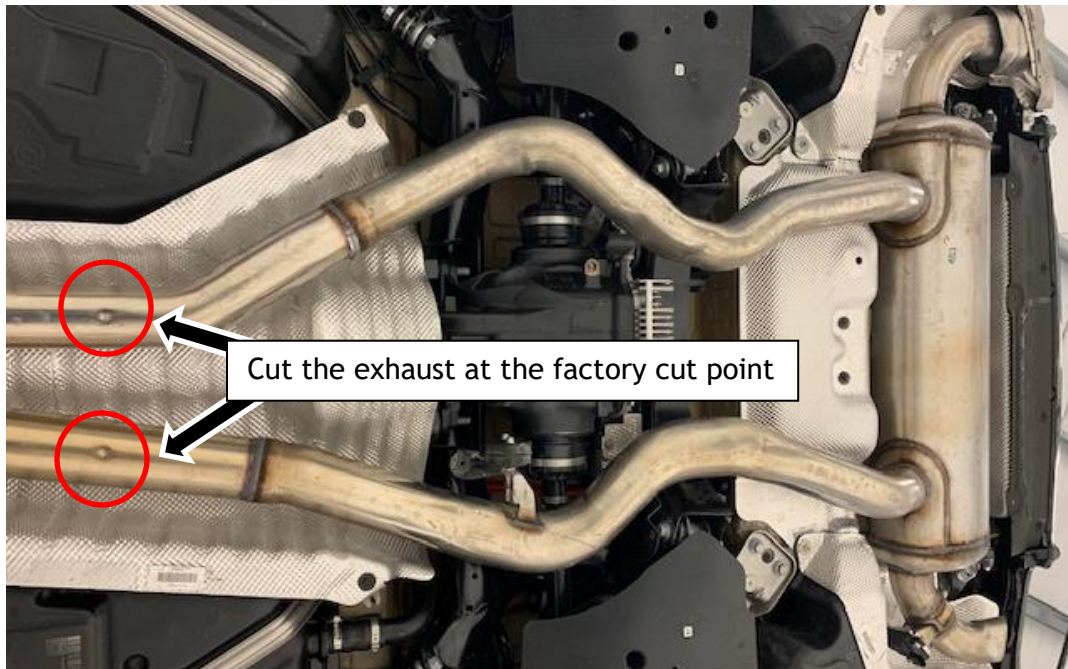
Parts List	2
Removal of Stock System	3
Installation of Wiring Harness	4
Installation of Exhaust Valves	8
Installation of Inlet Pipes	10
Installation of Dinan Muffler.....	11

Parts List

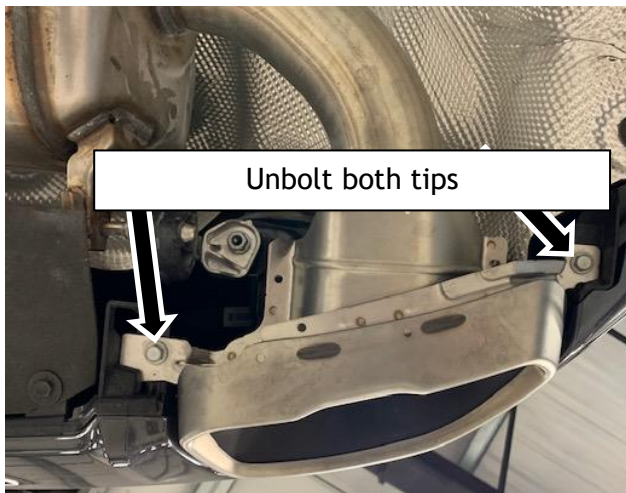
Quantity	Part #	Description
1	SD663-0354CW	Muffler Assembly
1	SD663-0354AW	Inlet Pipe; Left
1	SD663-0354BW	Inlet Pipe; Right
4	D663-0637 or -0638	Exhaust Tip
1	D663-0355	Hardware Kit; contains:
	5	D662-9237 3.00" Clamp (45 ft-lbs (61 Nm) E
	2	D662-9242 Torca Clamp (33ft-lbs) D
	1	D662-9228 2.75" Accuseal Clamp 45ft-lbs S
	2	D662-0433 Valve Mount
	2	D662-0665 D76 Limiter
	6	D671-0189 M6 Locknut; Oval
	6	D671-0193 M6x20x1.0 Socket Head Bolt
	4	D671-0377 M6x12x1.0 Button Head Bolt
	2	D671-0378 M6x16x1.0 Button Head Bolt
	18	M6 FLAT M6 Flat Washer
	6	M6 WAVE M6 Wave Washer
1	D663-0356	Exhaust Valve Actuator Kit; G20; contains:
	1	D661-0033 Exhaust Valve Motor
	1	D661-0032 Heat Shield; Exhaust Valve Motor
	2	D661-0031 Exhaust Valve Spring
	1	D662-0636 Wiring Extension Harness

Removal of Stock System

- 1) Support and cut the stock exhaust at the factory cut point.



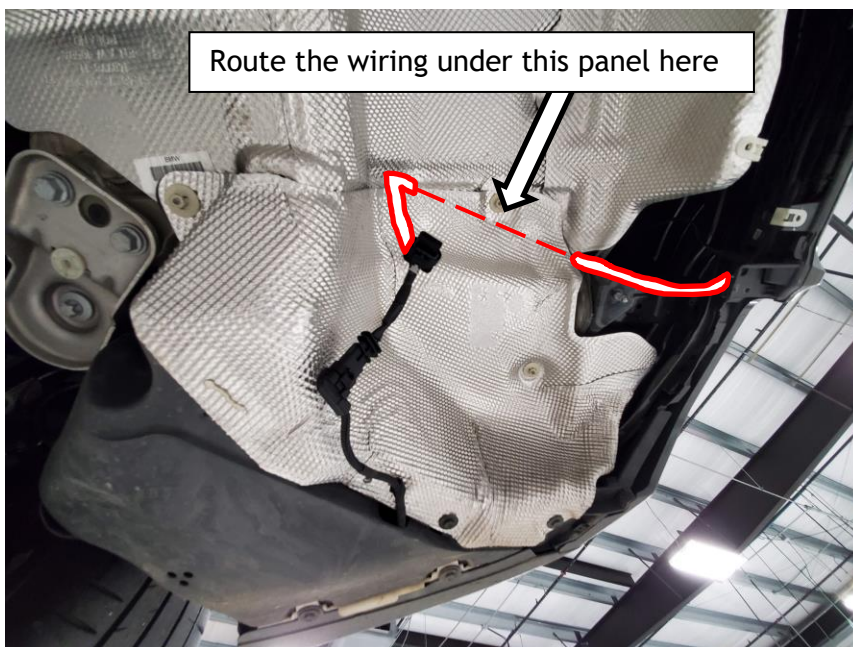
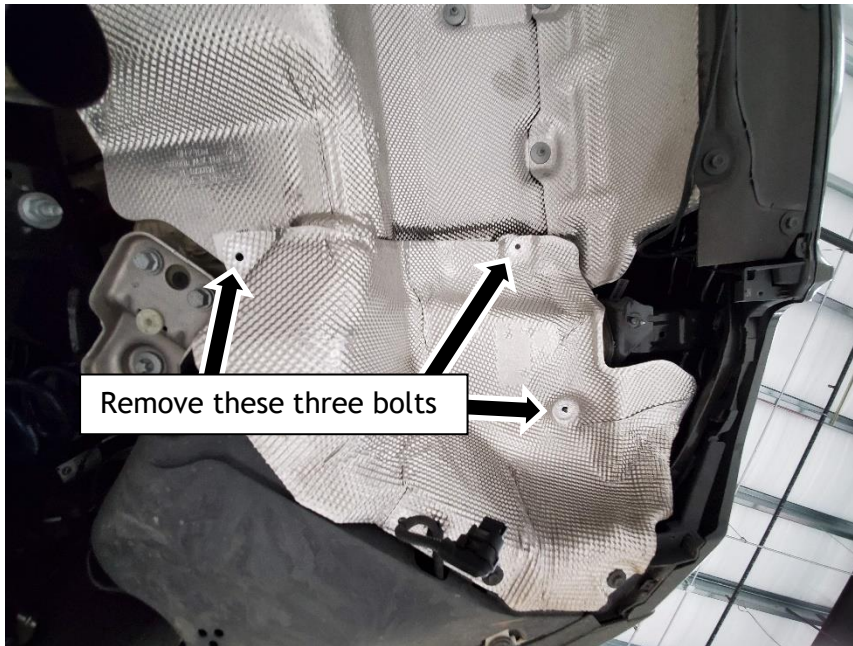
- 2) Remove both of the stock tips and unplug the exhaust valve.



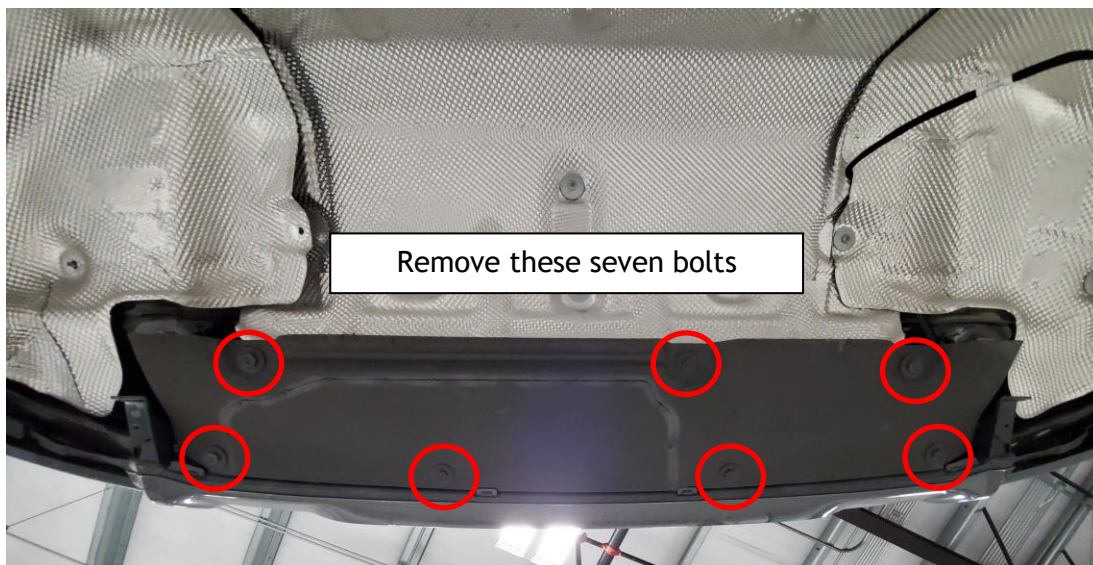
- 3) Unbolt the exhaust hangers and remove the stock muffler. For G23 & G26 - remove stock braces as needed.

Installation of Wiring Harness

- 4) Loosen the passenger's side panel in the muffler cavity and route the wiring as indicated below.



5) Remove the rear black panel.



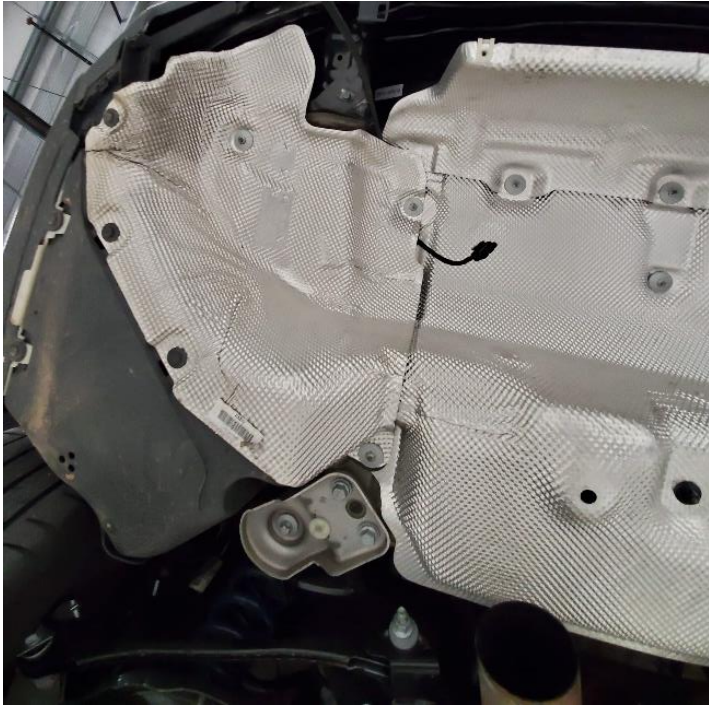
- 6) Route the wiring through the clips in the back bumper, above where the back panel mounts.



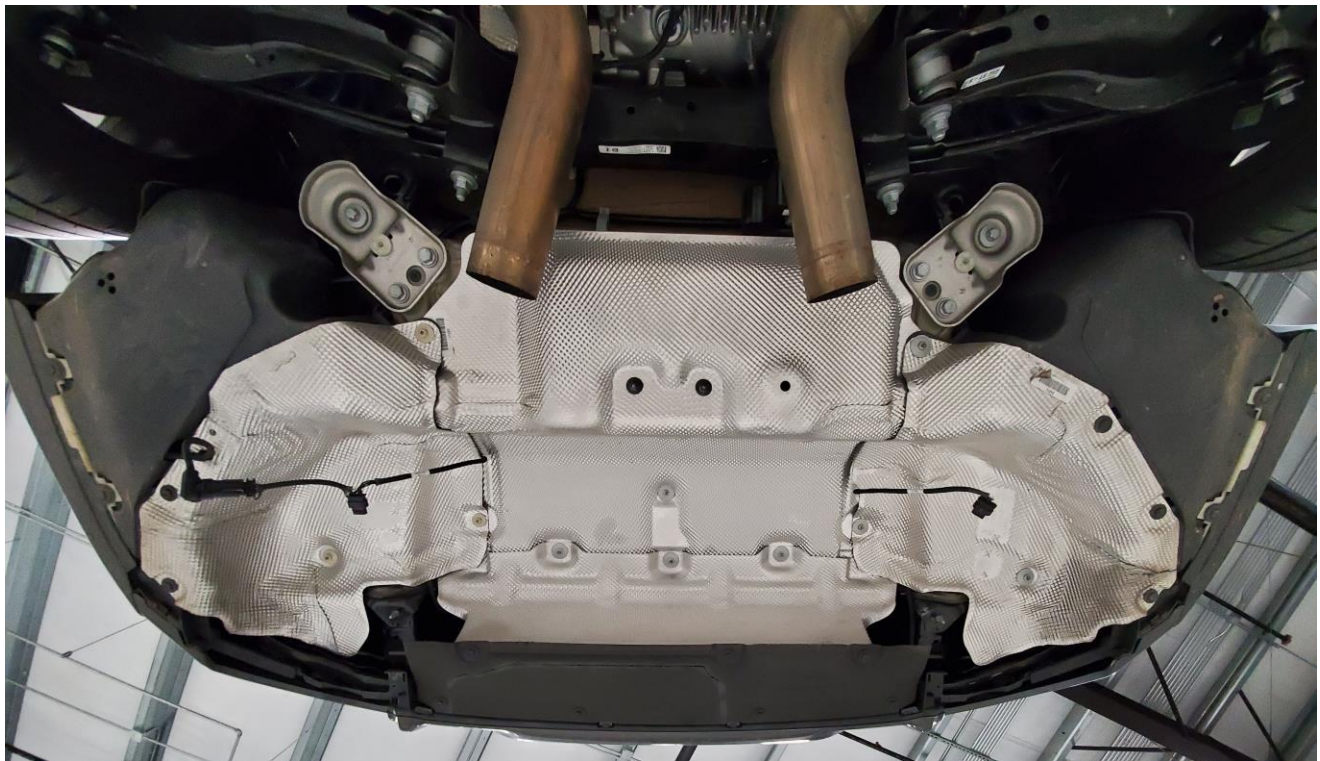
- 7) Loosen the driver's side panel and route the wiring as pictured below. Leave about 8 inches of wiring length on this side.



- 8) Secure the driver's side panel back in place. You may need to adjust this cable length later.

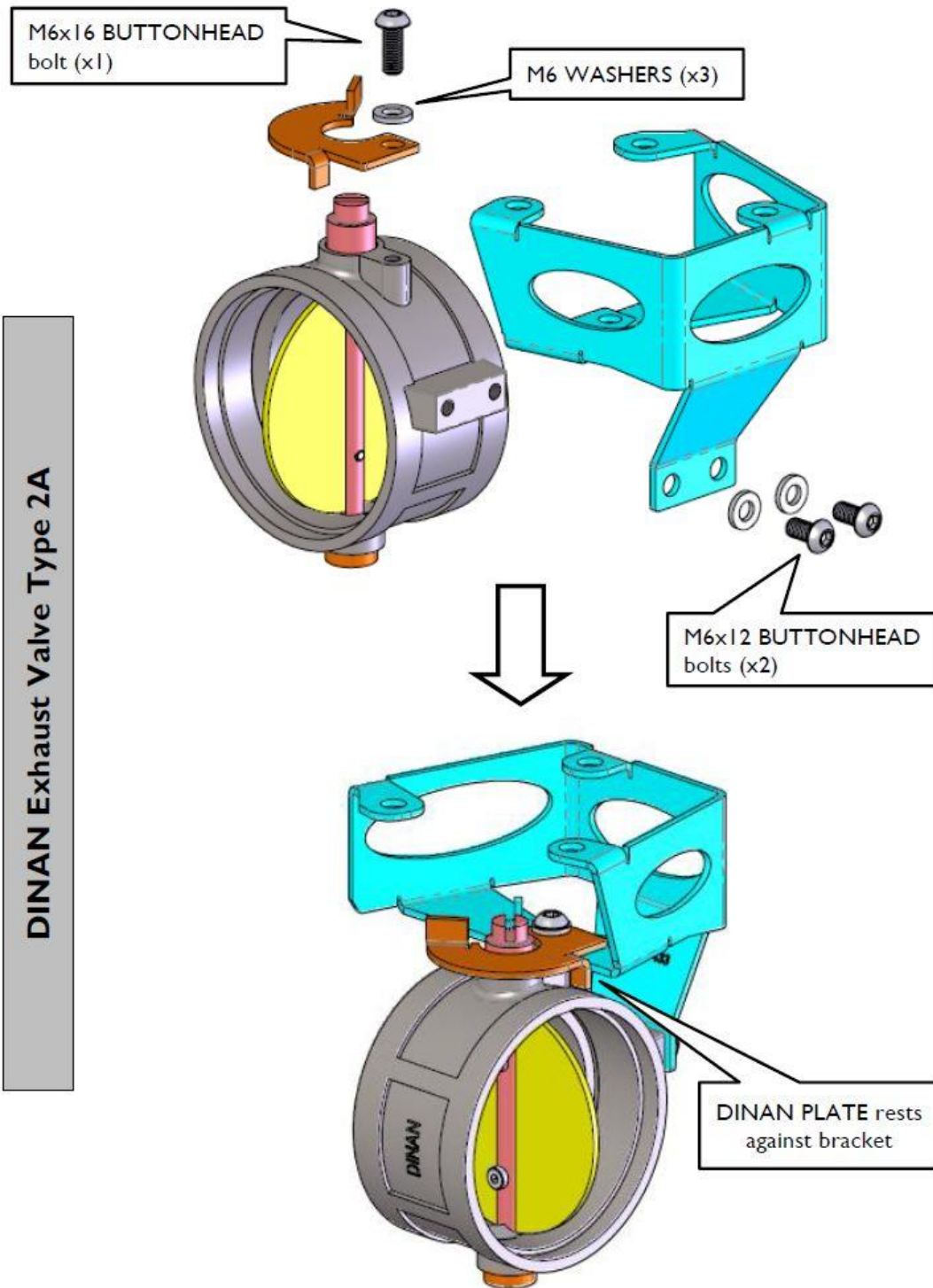


- 9) The muffler cavity should look like the picture below.

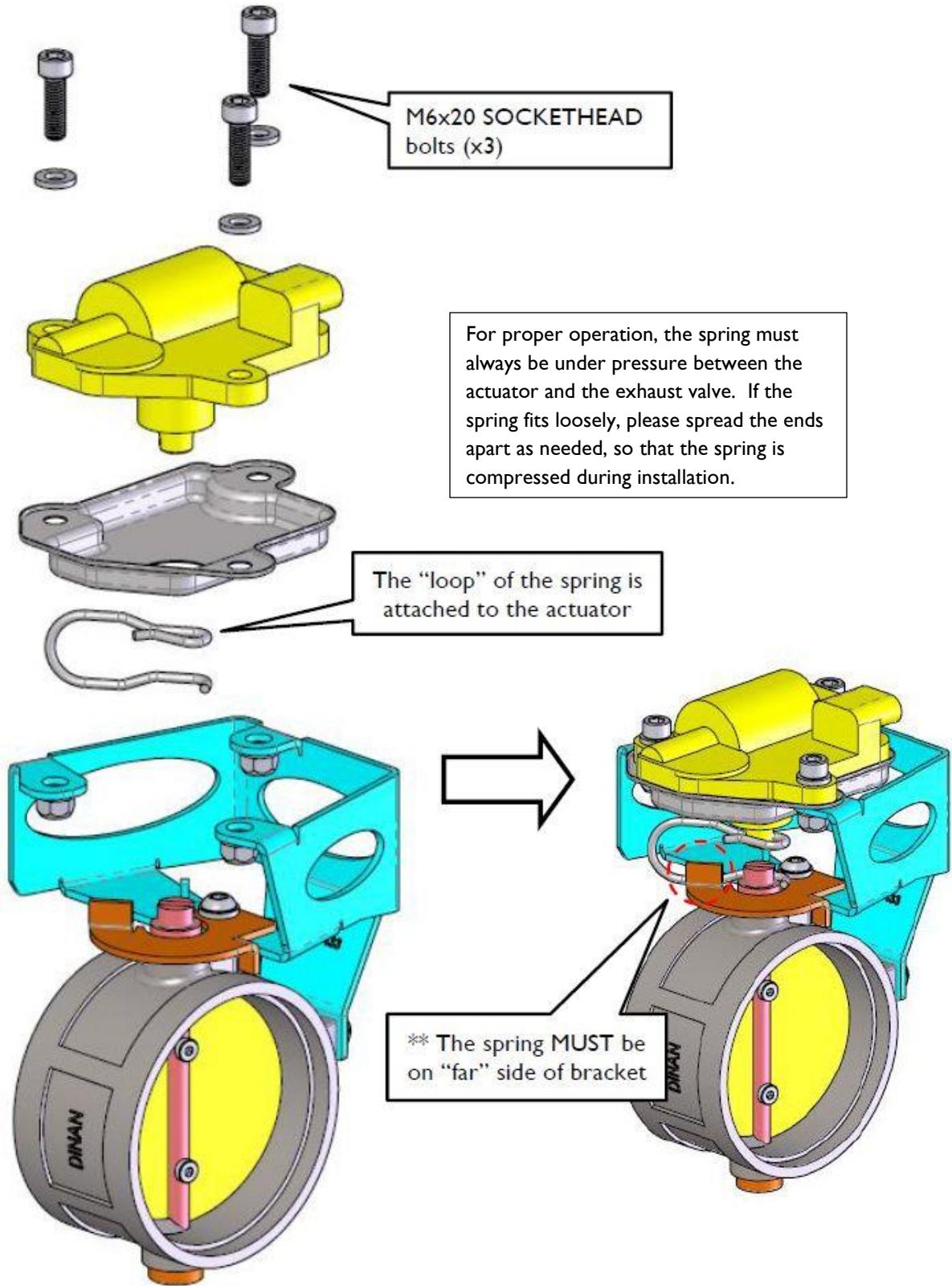


Installation of Exhaust Valves

10) Following the diagrams below, attach the actuators, brackets, and springs to the Dinan exhaust valves using the hardware provided.

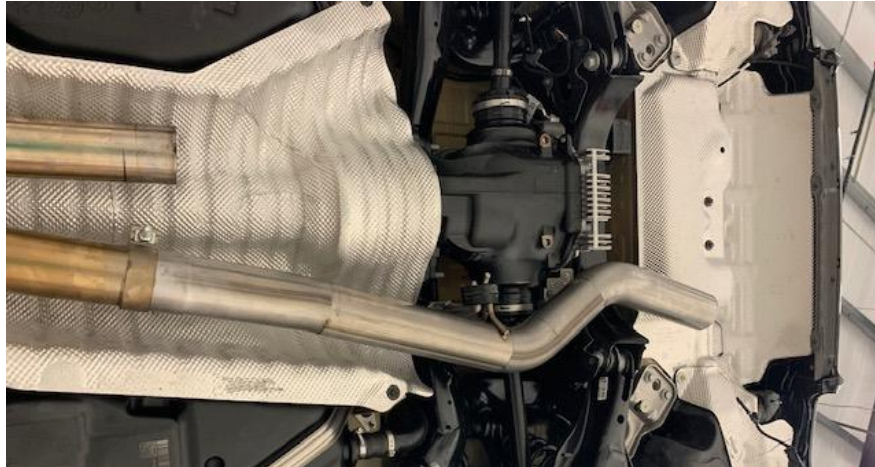


DINAN Exhaust Valve Type 2A



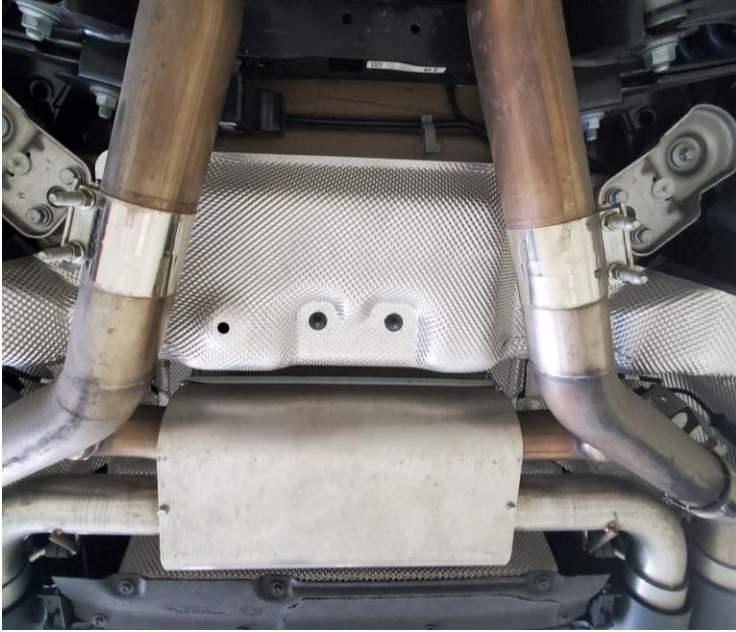
Installation of Inlet Pipes

11) Install the hangers onto the inlet pipes and install the inlet pipes. Loosely tighten the clamps, but do not fully torque yet.



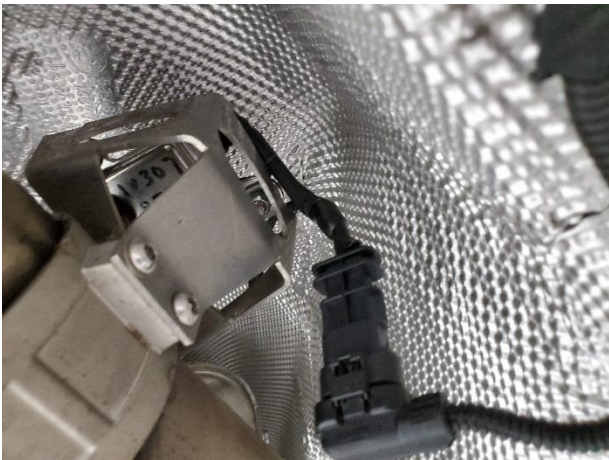
Installation of Dinan Muffler

12) Install the Dinan muffler by attaching the hangers and slipping the clamps over the inlet pipes.



13) Adjust the wiring length on either side to allow the valve motors to plug in. There should be sufficient slack on each side to allow for movement but without rubbing against or contacting anything.

Passenger's side:



Driver's side:



- 14) Once the wiring is adjusted, cable tie the newly installed exhaust valve cable in three places to the pre-existing cable in the rear bumper and trim the excess cable tie.



15) Reinstall the rear black bumper panel.



16) For G23 & G26 - reinstall the stock braces that were removed in Step 3.

17) Push the muffler up and forward then torque the clamps. If the muffler contacts any part of the car, twist the inlet pipes to adjust. Allow for the pipe clearances as pictured below.

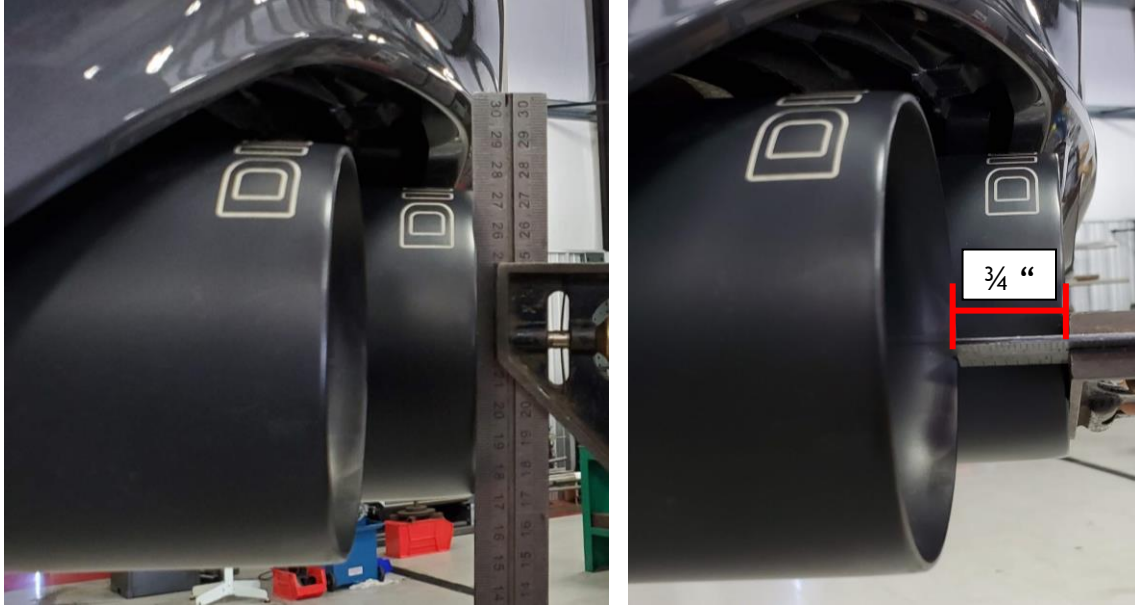
Torque Specifications:

- Single-Bolt Inlet Pipe Clamps: 45 ft-lbs
- Double-Bolt Muffler Clamps: 33 ft-lbs



18) Install all four tips, but do not secure them in place yet:

- The inside tips should be flush with the rear bumper as pictured below.
- The outside tips should be offset about $\frac{3}{4}$ " from the inside tip.



19) After adjusting the tip length and alignment, make sure the second vertical line of the N in the Dinan logo is facing straight up on all 4 tips.



20) The exhaust tips should fit on both sides as pictured below. Torque the exhaust tip clamps to 45 ft-lbs.

