



Installation Instructions

D660-0097 & D660-0097-BLK A90 SUPRA – 4 CYL AXLE BACK EXHAUST SYSTEM

Document Revision: A

Release Date: 4/12/2023

Table of Contents

PARTS LIST	2
REMOVAL OF STOCK SYSTEM	3
VALVE-ACTUATOR INSTALLATION	6
DINAN EXHAUST INSTALLATION.....	8

Thank you for being selective enough to choose a Dinan Performance Exhaust System. The Dinan Engineering Team has spent many hours developing this product to assure that you will receive maximum benefits for a more aggressive sounding system, increased performance, durability and an aesthetic design that you as a customer will be able to enjoy for many years. Ease of installation and maintenance is important to us and has been highly considered throughout the design process.

Prior to performing the installation, familiarize yourself with these instructions as it should help you with the process. If you feel that you do not have the required skills or tools, please arrange for a qualified repair facility to perform the installation.

If you have any difficulties during the installation, or if these instructions are not clear to you, please call Dinan's Technical Support Staff at (800) 341-5480.

Again, thank you for choosing Dinan. Enjoy.

PARTS LIST

Box Contents

Dinan Part Number	Description	QTY
D662-0685	ASSY, REAR MUFFLER	1
D662-0686	ASSY, INLET PIPE, 4-CYL	1
D663-0382	HARDWARE KIT	1
D663-0645	POLISHED EXHAUST TIPS	2
OR	OR	
D663-0646	BLACK EXHAUST TIPS	2

Hardware Kit Contents

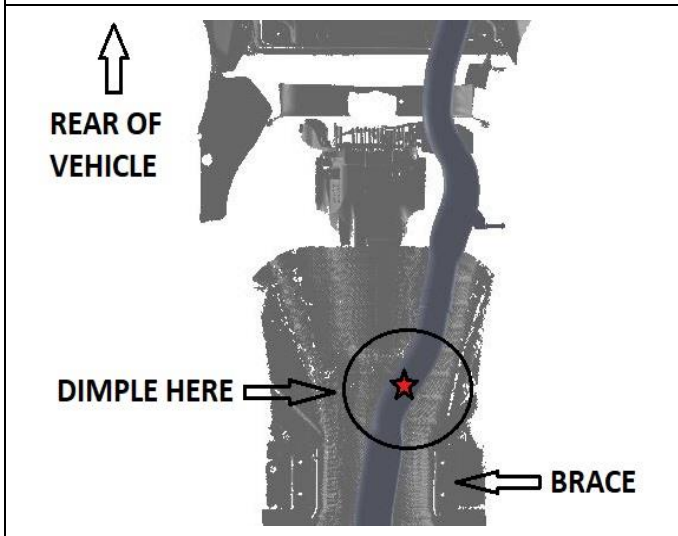
Dinan Part Number	Description	QTY
D662-0677	EXTENSION HARNESS; G8X	1
D662-9248	80MM/3.25IN BAND CLAMP	4
D661-0031	SPRING	1
D661-0032	HEAT SHIELD; VALVE MOTOR	1
D662-0433	VALVE MOUNT V2	1
D671-0189	M6 LOCKNUT, OVAL	3
D671-0193	M6X20X1.0P SKT HEAD, SS	3
D671-0377	M6X12X1.0P SS BUTTON HD	2
D671-0378	M6X16X1.0P SS BUTTON HEAD	1
M6 FLAT	M6 FLAT WASHER	9
M6 WAVE	M6 WAVE WASHER	3
D662-0665	D76 LIMITER	1

REMOVAL OF STOCK SYSTEM



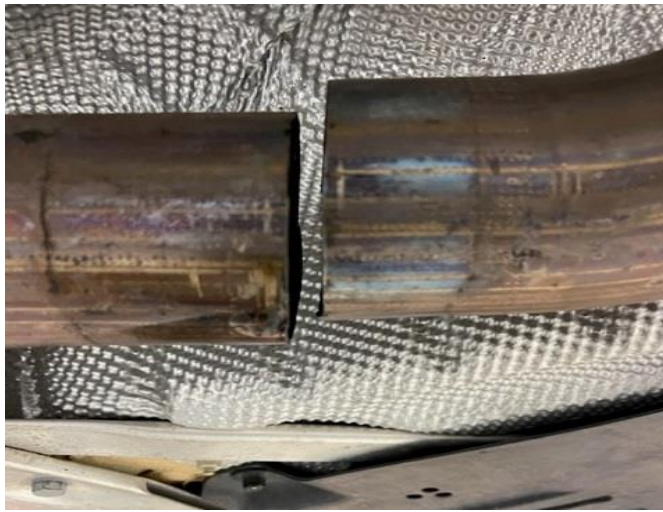
STEP 1:

Unplug the connector from the valve motor located on driver side of the stock exhaust.



STEP 2:

Locate the factory cut point. From under the vehicle, locate the dimple in the area as shown. This will be positioned at the center of the tube at the shown location.

**STEP 3:**

Cut through exhaust pipe at the dimple point with a suitable tool.

Ensure the cut is perpendicular to the pipe.

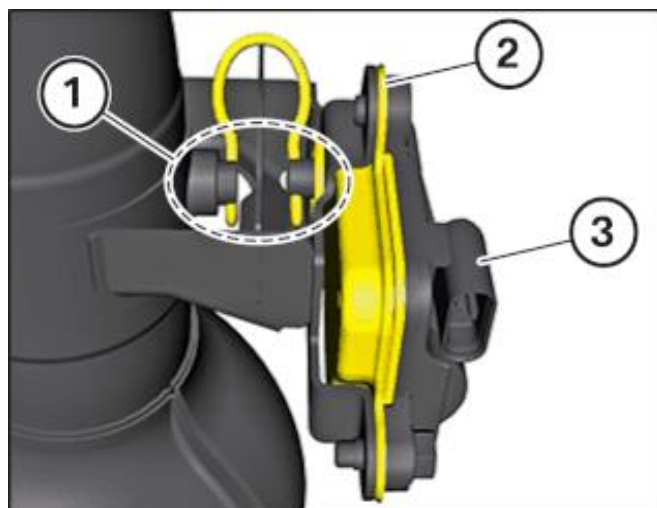
**STEP 4:**

Locate the 3 rubber hangers.

- 2 are located near the rear of the vehicle on both passenger and driver side as shown in picture
- 1 is located near the cut point

Remove the 3 rubber hanger nuts from the vehicle.

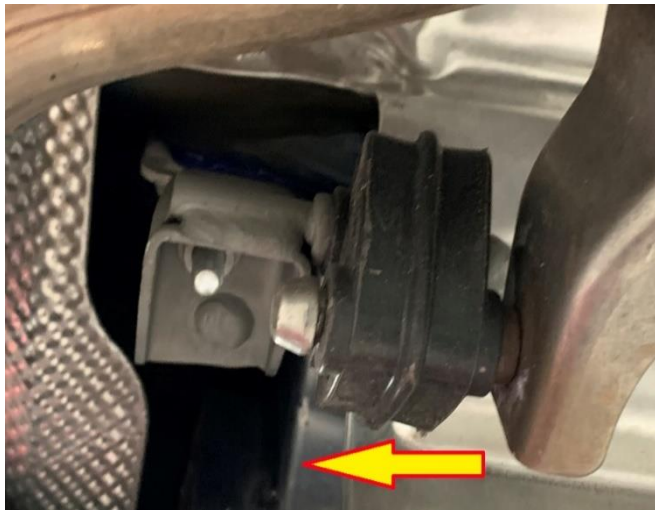
This will drop the exhaust from the vehicle. A stand or 2nd person is recommended to help lower the system from the vehicle.

**STEP 5:**

Loosen and remove the screws holding on the actuator motor.

Remove the spring (1), actuator heat shield (2) and actuator motor (3).

The motor (3) will be re-used.



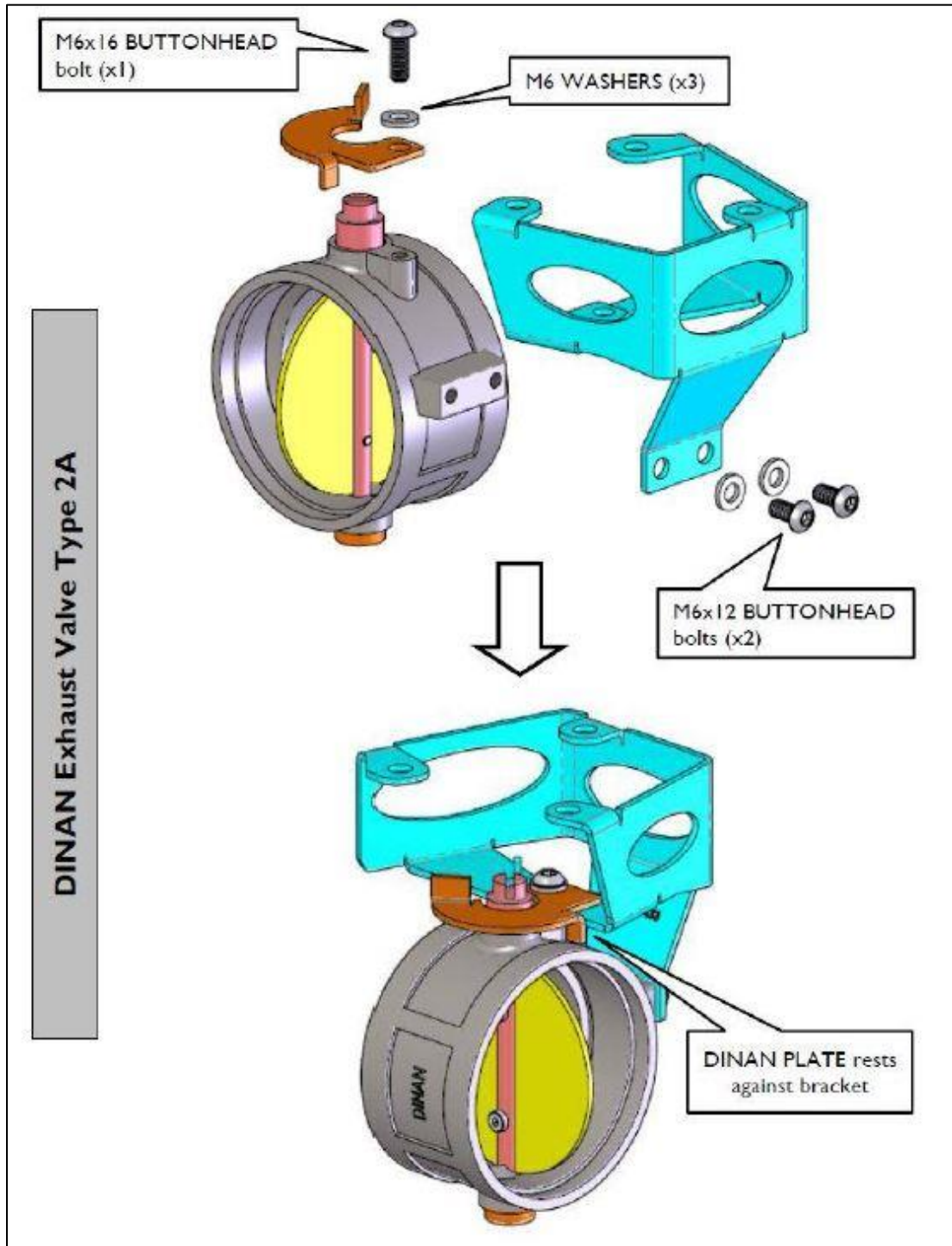
STEP 6:

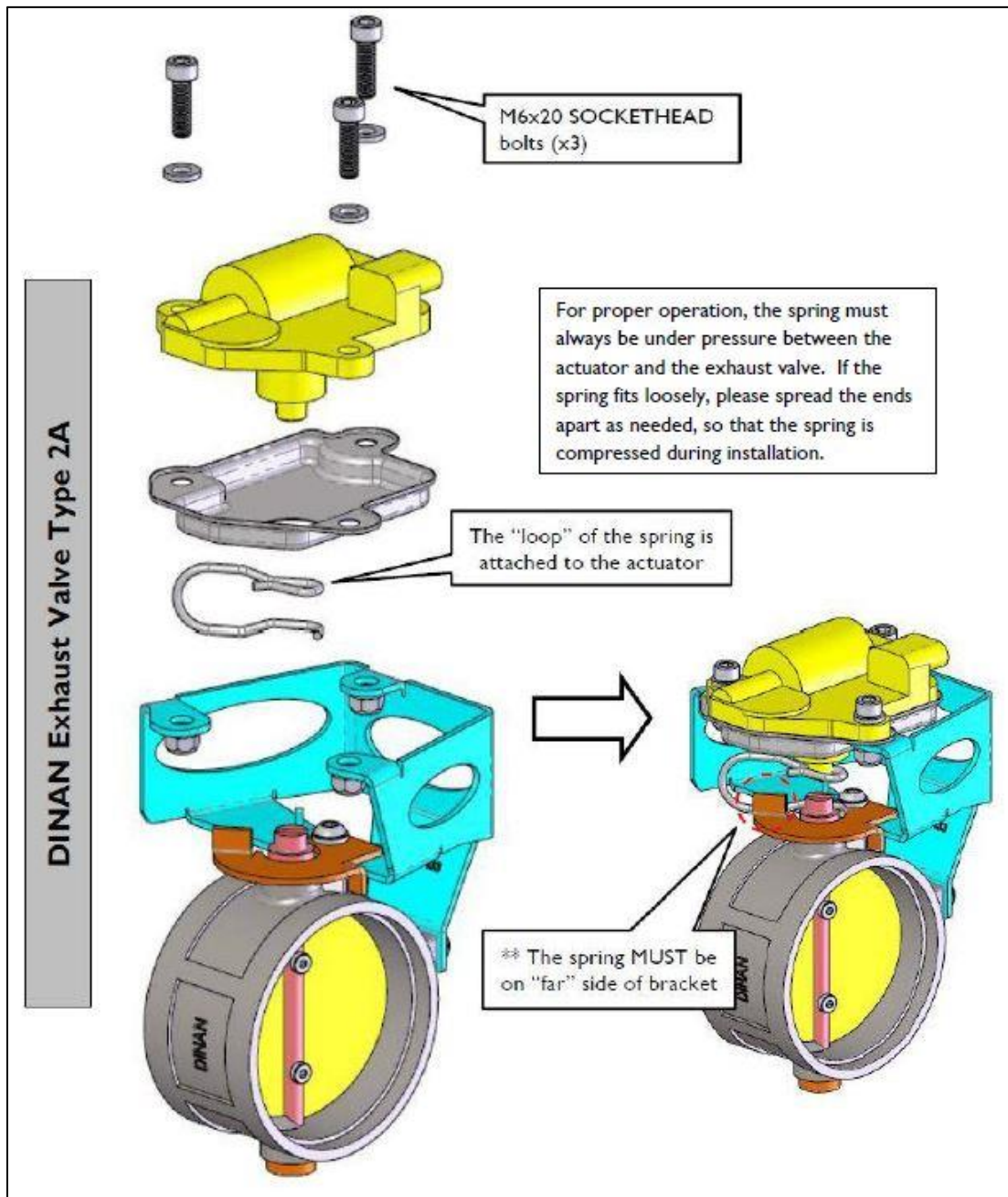
Remove the 3 rubber hanger mounts from the stock silencer.

It is recommended that each one is immediately transferred to the Dinan exhaust system to ensure proper location and orientation.

VALVE-ACTUATOR INSTALLATION

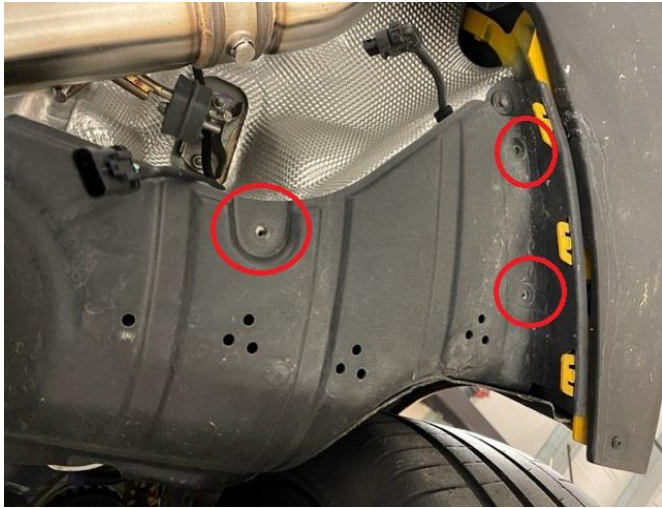
Following the diagrams below, attach the actuators, brackets, and springs to the Dinan exhaust valves using the provided hardware.





****IT IS NECESSARY THAT THE SPRING IS COMPRESSED AGAINST THE VALVE AND THE MOTOR DURING ASSEMBLY. IF THIS IS NOT THE CASE, PLEASE STRETCH THE SPRING OUT SLIGHTLY. FAILURE TO DO SO MAY CAUSE UNNECESSARY VIBRATION NOISES. ****

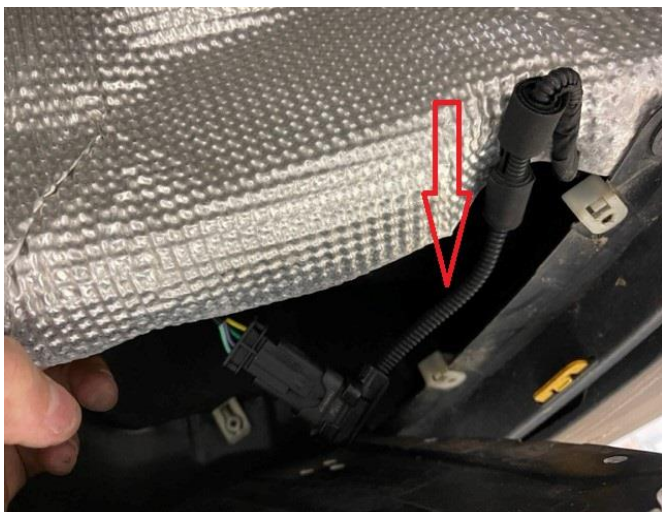
DINAN EXHAUST INSTALLATION



STEP 1:

STEPS 1-4 include installation of the extension wire harness:

Remove the screws from the panel on the side of the stock motor connector.



STEP 2:

The stock harness is attached to the heat shield as shown.

Pull the harness through the isolator mounts to extend a few more inches.

Rotate the mount 180 degrees such that the connector will feed back under the panel.

Connect the extension harness as shown.

**STEP 3:**

The proper routing at this position shall look like this.

**STEP 4:**

Route the extension harness behind the heatshield.

The harness shall be pulled through the opening of the hanger mount that is next to the valve and motor.

Pull enough out to connect to the motor once the exhaust is installed.

Re-install all screws that were removed from the panel at this time.

**STEP 5:**

As noted in the final removal step:

Slide all rubber hangers onto the Dinan Exhaust system in the proper orientation.

There are 3 total:

- 1 for the inlet tube
- 2 for the axle back muffler section

*Image is for reference only

**STEP 6:**

Slide 1 clamp onto the inlet pipe that will attach to the stock cut point.

Slide the inlet pipe onto the stock pipe.

The inlet pipe shall plunge 2" onto the pipe.

**STEP 7:**

The inlet pipe shall be positioned in the shown orientation.

Properly seat hanger and tighten the nuts to the vehicle.

Only snug tight the clamp, as adjustment in the pipes may be needed to properly align the muffler assembly section.

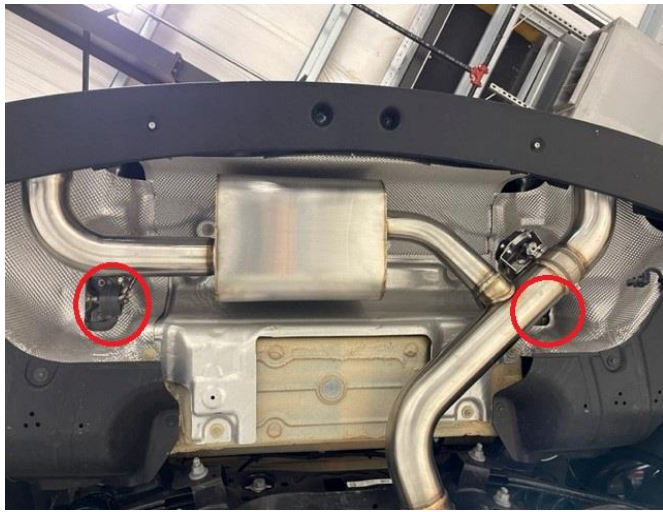
**STEP 8:**

Slide 1 clamp over the rear muffler section inlet pipe.

With the help of a friend, take the muffler section and slide the inlet pipe over the already positioned inlet pipe.

Overlap shall be approx. 2"

Do not tighten clamp at this time.

**STEP 9:**

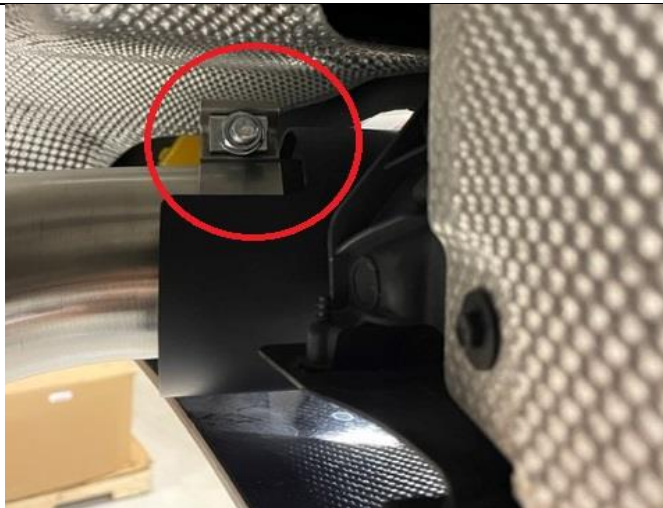
Once Step 8 is complete, properly seat hanger and tighten the nuts to the vehicle in both locations shown.

Ensure the nuts are tightened properly.

Again, do not fully tighten any clamps as adjustment may be needed. This will be done in later steps.

**STEP 10:**

Slide the remaining 2 clamps onto the exhaust tips as shown.

**STEP 11:**

Slide each clamp onto the outlet pipes of the exhaust with the tightening bolt in the orientation as shown.

Snug fit for positioning.

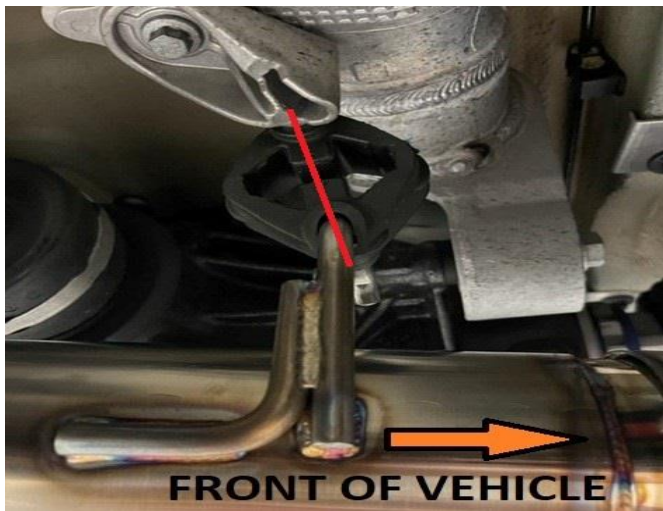
**STEP 12:**

Ensure DINAN logo is pointing up and tips are parallel to each other. The CENTER shall be between the 'N' and 'A' in DINAN. This shall be pointing straight up.

The tips may not be exactly evenly spaced from the bumper. We will fix this later.

Recommended tip position is shown. It is the desire of the customer on how far in or out they choose, as long as there is enough clamping surface.

Tighten tip clamps once desired positioning of tips is achieved.

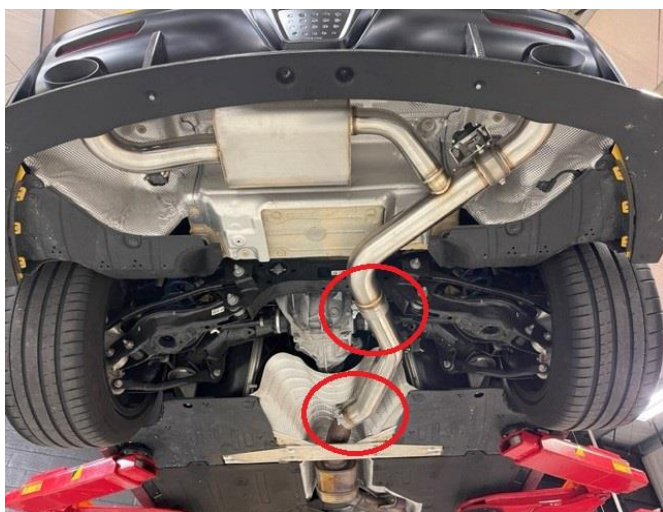
**STEP 13:**

Once the tips are tightened, final adjustment is needed.

Have 1 person push the exhaust system towards the front of the car and also upward. This may press the tips into the bumper slightly.

Proceed to the next step.

ALL HANGERS SHALL BE STRAIGHT DOWN OR ANGLED TOWARDS THE FRONT OF THE AS SHOWN.

**STEP 14:**

Tighten the 2 clamps on the pipes and let system rest.

Examine the position of the tips and ensure that they are equally positioned from left to right. Examine to ensure proper clearance throughout the system.

Adjustment may be needed. Rotation of the inlet pipe may be necessary.

Once desired position is reached, ensure all clamps on both pipes and tips are fully tightened. Don't be shy.

**STEP 15:**

Connect the extension harness to the motor as shown.

Feed any slack back into the heat shield opening.

**FINAL STEP AND CHECK:**

1. ENSURE PROPER POSITION OF EXHAUST TIPS
2. ENSURE ALL PIPES HAVE CLEARANCE
3. ENSURE MOTOR IS PLUGGED INTO WIRE HARNESES
4. REVIEW FINAL POSITION AND ENSURE ALL CLAMPS ARE TIGHT
5. **ENJOY**