



DINAN

**iMIPP CONNECTOR KIT; OBD2/Ethernet
INSTALLATION INSTRUCTIONS**

PART NUMBER

DT440-0004

APPLICATIONS:

2011-12	F01/F02	Alpina B7, B7L & xDrive sedan
2011-13	F10	550i & xDrive sedan
2010-12	F07	550i & xDrive Gran Turismo
2012	F12/F13	650i & xDrive coupe/convertible
2009-12	F01/F02	750i/Li & xDrive sedan

Congratulations for being selective enough to use Dinan Performance Software. We have spent many hours developing this system to assure that you will receive maximum performance and durability with minimum difficulty in installation. Please take the time to read these instructions and call us if you have any difficulties during the installation.

NOTE: This kit does not fit all combinations of vehicles & engines. Please pay careful attention to the vehicles listed above. Do not install this kit if your specific vehicle configuration is not shown. Please contact your Dinan representative if you have any questions.

PARTS LIST

Qty	Part #	Description
1	DT441-0016	USB-to-Ethernet Adapter
1	DT443-0017	OBD2/Ethernet Connector

PREREQUISITES:

In addition to the items provided in this kit, the following items will also be required for successful programming of your vehicle with Dinan software:

- A Windows PC, which meets the following minimum requirements:
 - a) 1GB or greater RAM
 - b) Screen resolution of 1024x768 or higher
 - c) An available USB port (1.0 or higher)
- Windows operating system: XP Service Pack 3, or later
- Supported browsers: Internet Explorer 11 or later; Chrome; Firefox; or Opera
- Internet connection at the vehicle (a strong & stable internet connection is required at the vehicle during programming)
- Login credentials to Dinan's Client Portal (your username/email and password would have been emailed to you, after you activated your purchase of the Dinan software).

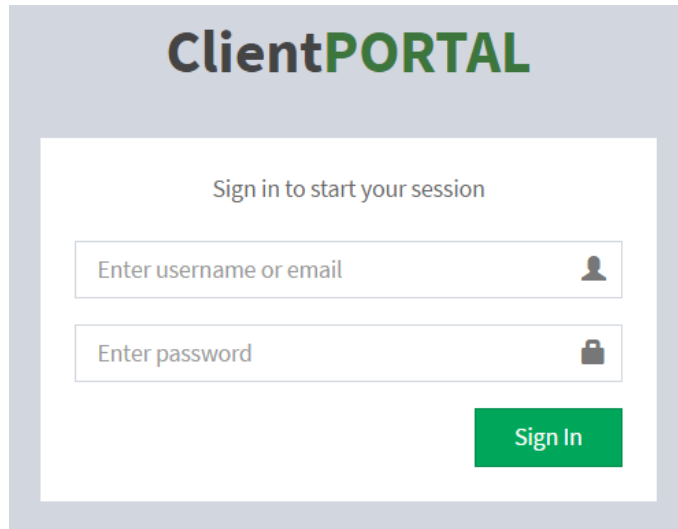
Please contact Dinan tech support at 800-341-5480 if you have any questions about these requirements.

Note: Installing Dinan software into your vehicle consists of three phases:

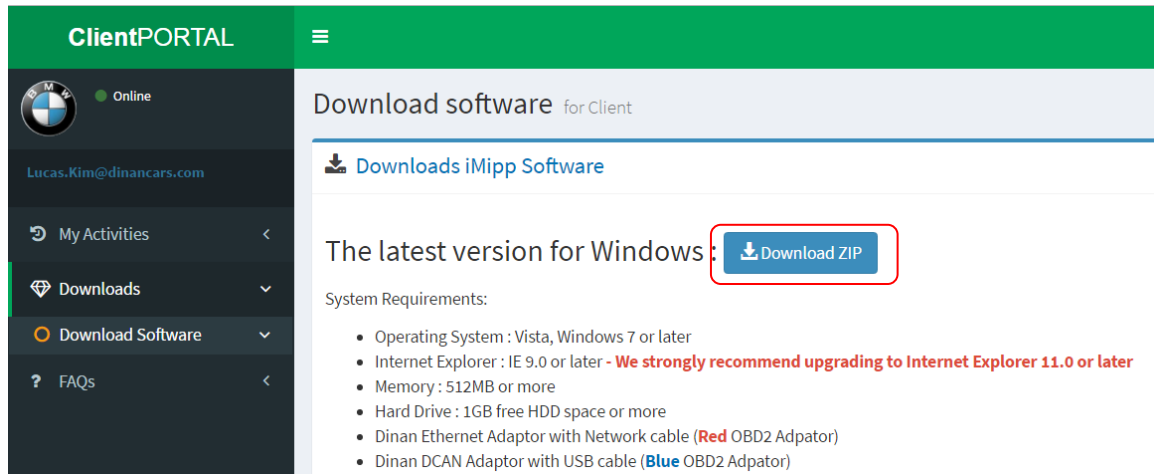
- Download and install the iMIPP client software.
- Connect to vehicle
- Install Dinan software

DOWNLOAD & INSTALL iMIPP CLIENT SOFTWARE:

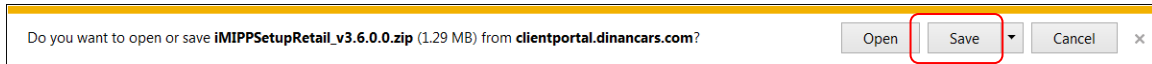
1. Open your web browser and navigate to <https://clientportal.dinancars.com> At the site, login with the email and password that was provided to you:



2. After successfully logging in, go to Download Software and then click on 'Download' button in iMIPP Software.



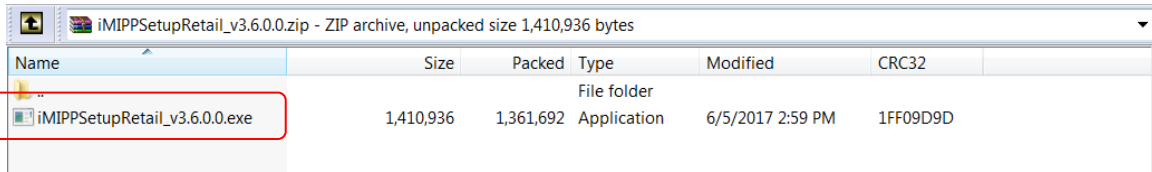
3. After clicking on the "Download ZIP" button, your web browser may prompt you with a request to either open or save the download. Click "Save" if this prompt occurs.



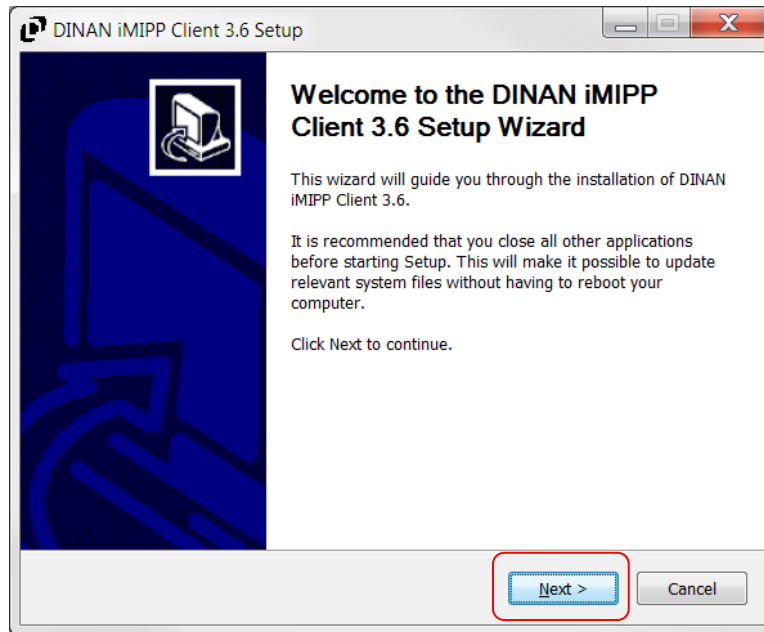
4. Once the download has completed, open the downloaded file. The file should be in a Zip format and will be located where you chose to save the download.



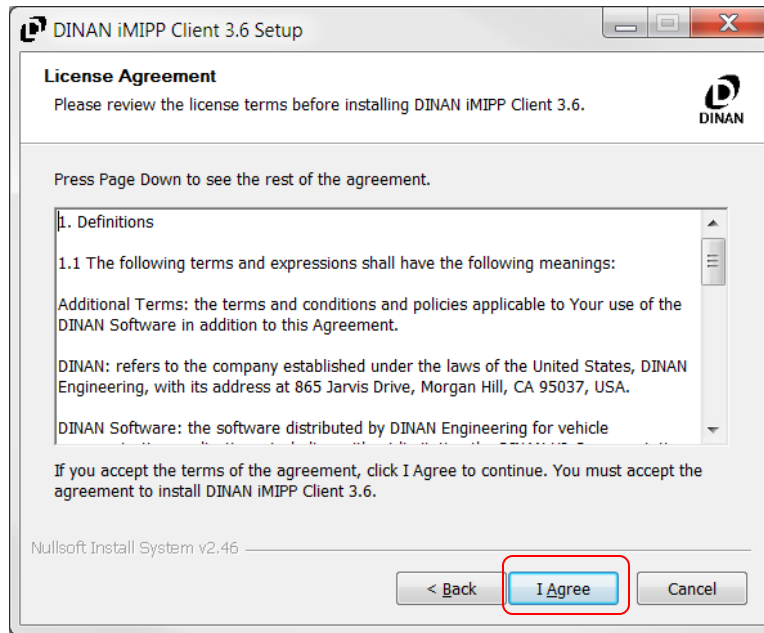
5. The downloaded Zip file should open through Windows explorer and contain an executable file called "iMIPPSSetupX.X.exe". Double-click on the iMIPPSSetup file and click "Run" when prompted, to start the iMIPPSSetup program.



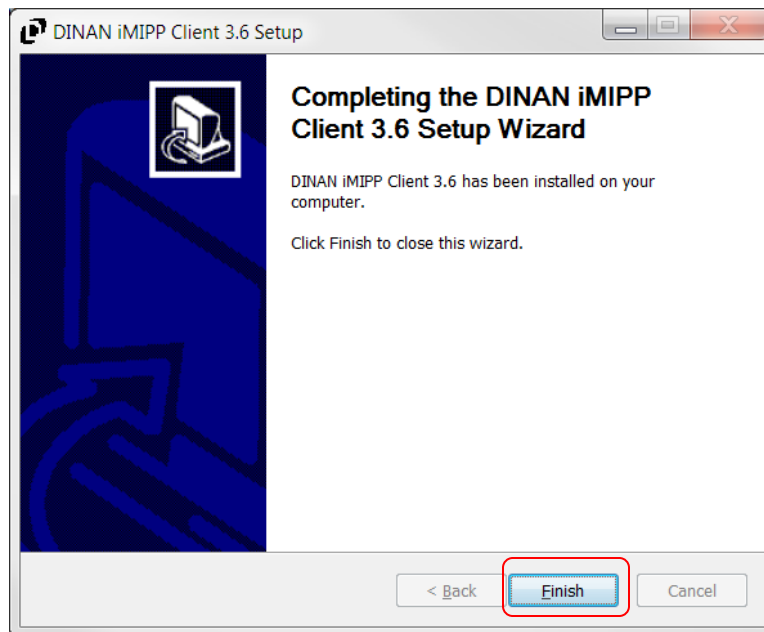
6. When the iMIPPSSetup program starts, a welcome screen will appear. Click "Next" to continue the setup process.



7. On the next screen, a License Agreement will need to be accepted in order to install the iMIPP application. Clicking on the "Accept" button will continue the setup.



8. Once the installation process is complete, the iMIPPSetup program will prompt a finish screen. Click the "Finish" button to complete the installation of iMIPP.



9. With the installation complete, two icons should appear on your desktop: a blue "DINAN iMIPP DCAN Client" icon and a red "DINAN iMIPP Ethernet Client" icon. This indicates a successful installation.



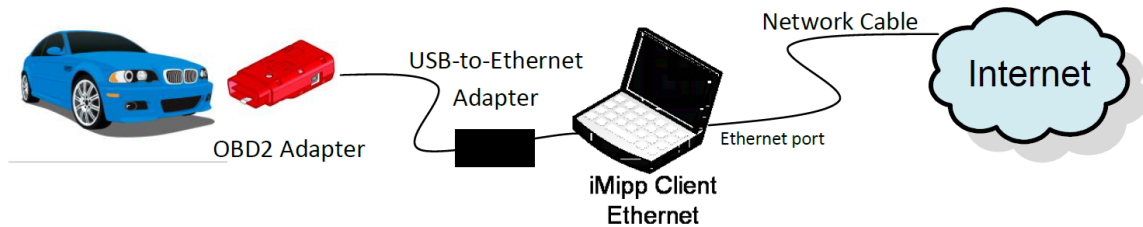
CONNECT TO VEHICLE:

10. Verify that internet connectivity is available at the vehicle. While a wired connection is much preferred, a **strong & stable** Wi-Fi connection can be used to successfully load Dinan software

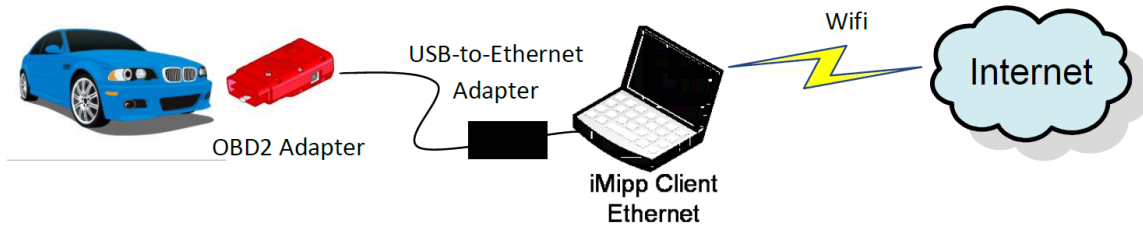
11. Connect to your vehicle:

- Attach the provided USB-to-Ethernet Adapter into an available USB port on your PC.
- Connect the Dinan OBD2/Ethernet adapter to the new Ethernet port.
- Attach the OBD2 connector to the OBD2 port on your vehicle.

Using a wired connection:



Using a strong Wi-Fi connection



INSTALL DINAN SOFTWARE:

WARNING: Programming can take 15-30 minutes, depending on the vehicle and your internet speed. Successful installation of Dinan software requires a strong & stable internet connection, and adequate battery power at the vehicle, for the entire duration of this procedure. If programming is interrupted for any reason, the vehicle may become inoperable. For best results, please take note of the following:

- To help maintain sufficient voltage during programming, attach a charger to the vehicle battery.
- Turn off all accessories (i.e., radio, fans, headlights, etc.) to minimize load on the battery.
- If equipped, please disconnect all Bluetooth devices from the vehicle (to prevent programming being interrupted by an unexpected phone call).
- To prevent the vehicle electronics from "going to sleep", leave the driver's door open during programming.
- Disable any automatic updates on the PC (i.e., Windows updates, anti-virus, etc.).
- Disable any scheduled activities on the PC (i.e., daily anti-virus scans, automatic backups, etc.).
- Disable any screen savers on the PC.
- Disable any timers that put the PC to sleep.

12. Turn the vehicle ignition to "ON", but do not start the engine.

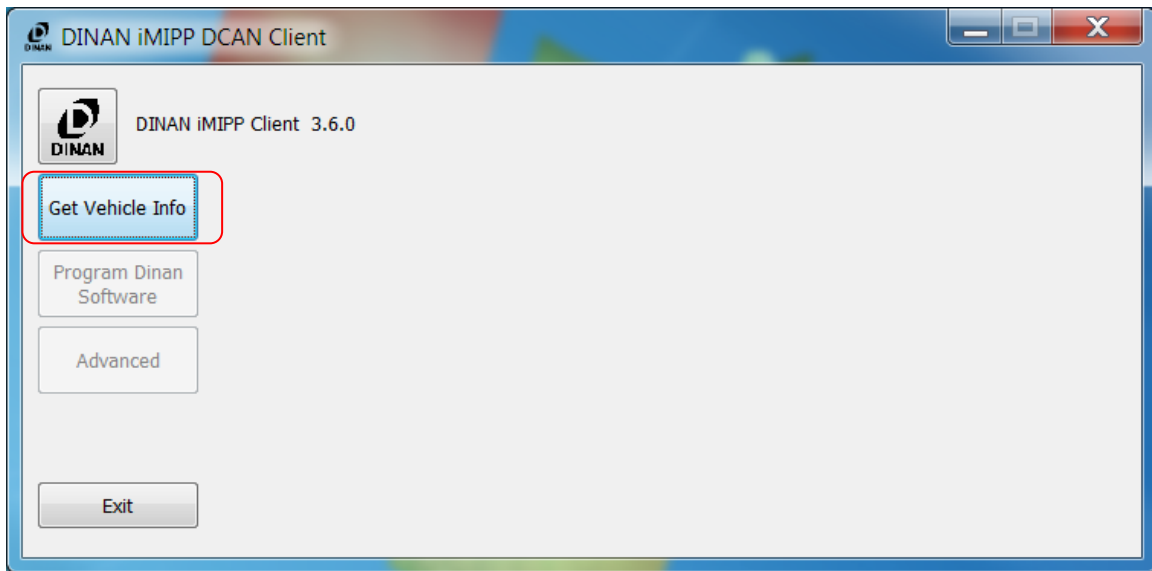
13. Double-click to launch the "DINAN iMIPP Ethernet Client" (red icon). The blue iMIPP DCAN Client icon is not used with this connection.



14. Opening the iMIPP application should prompt you with a login screen. Enter your DINAN login and password in the prompt, then click "OK" to login the system.

A screenshot of a login dialog box titled 'Dinan Engineering iMipp Log-in'. The dialog has a light blue border and a white background. It contains two input fields: 'Login:' and 'Password :'. To the right of the 'Login:' field is a blue 'OK' button. To the right of the 'Password :' field is a grey 'Cancel' button.

15. After logging into the iMIPP client, you will have two options available: "Get Vehicle Info" or "Exit" the application.

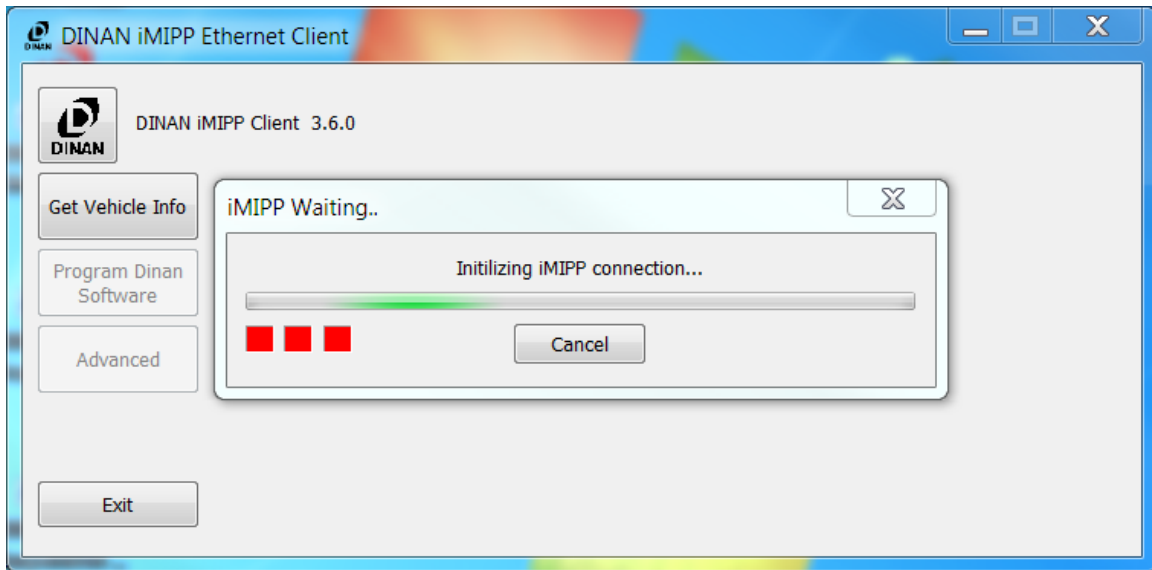


16. Clicking on the "Get Vehicle Info" button in iMIPP Ethernet client may bring up the Firewall Alert. Press "Unblock" button to continue.

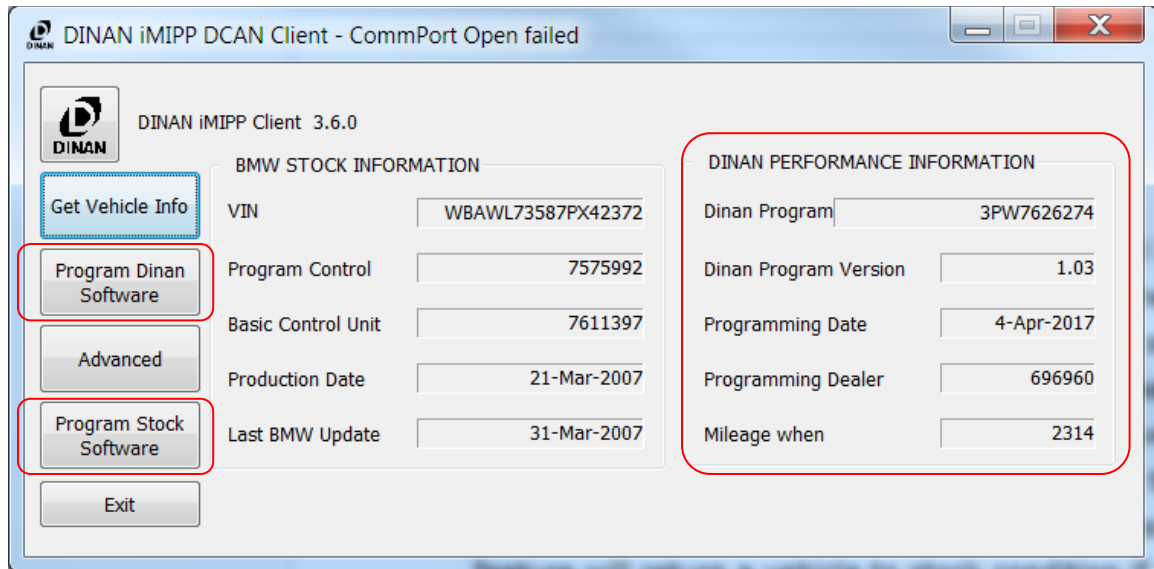


17. iMipp Ethernet Client may take up to 5 minutes initializing the connection to vehicle. Therefore, you have to wait until the iMipp Waiting window disappears from the Client Window. If the “iMipp Waiting” boxes do not change from red to green after 5 minutes...

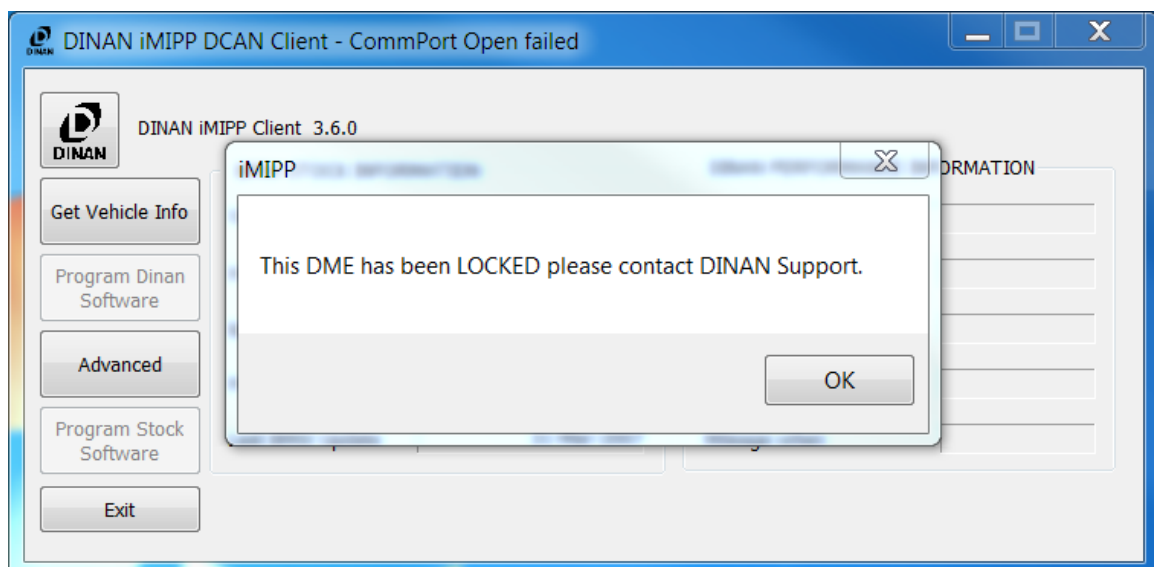
- Disconnect the OBD2 adapter's Ethernet cable from the USB-Ethernet adapter
- Wait 2 minutes
- Reconnect OBD2 adapter to PC, and the first red light should turn green.
- If the problem persists, please contact DINAN tech support (800-341-5480) for further assistance.



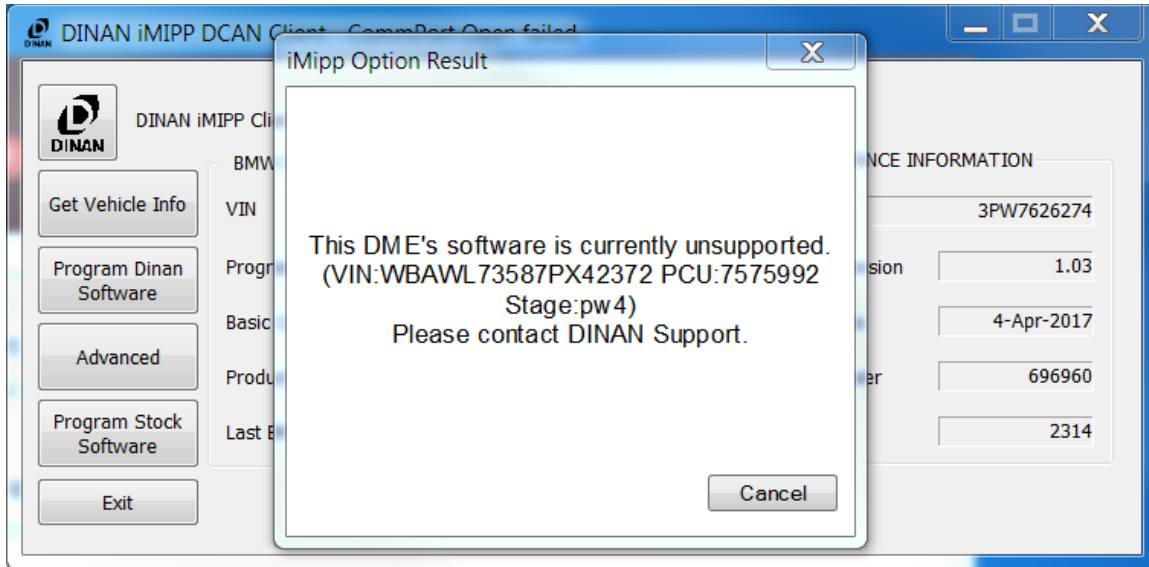
18. Clicking on the "Get Vehicle Info" button will bring up the vehicle's information. The iMIPP client displays BMW information on the left and DINAN information (if available) on the right of the screen. If DINAN software is not present on the vehicle already, no DINAN information will appear on the right of the screen. Once "Get Vehicle Info" has completed querying the vehicle, the "Program DINAN Software" is enabled. In the illustration below, the "Program Stock Software" button appears for vehicles which have DINAN software currently installed; this feature will return a vehicle to stock condition if selected.



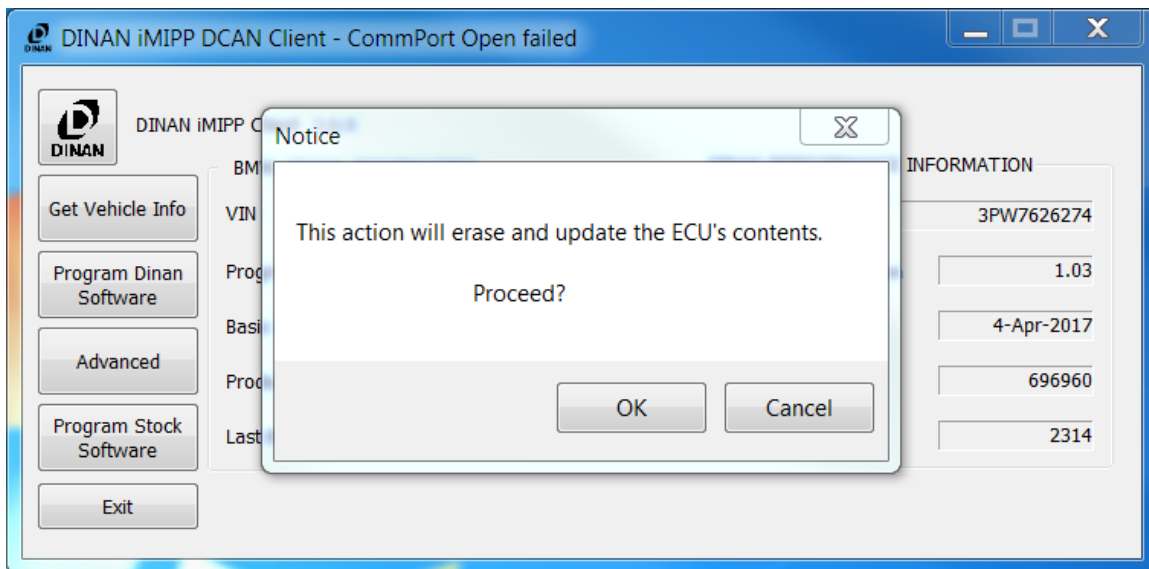
19. Clicking "Get Vehicle Info" may also return the message: "This DME has been LOCKED please contact DINAN Support". In this case, the vehicle connected to iMIPP has been previously programmed by DINAN and currently has a lock placed on its VIN. This is a security measure in place to protect the vehicle from unintended programming. To remove the lock, simply contact DINAN Support (800-341-5480) for quick removal of this lock by answering a few questions to proceed with programming your vehicle.



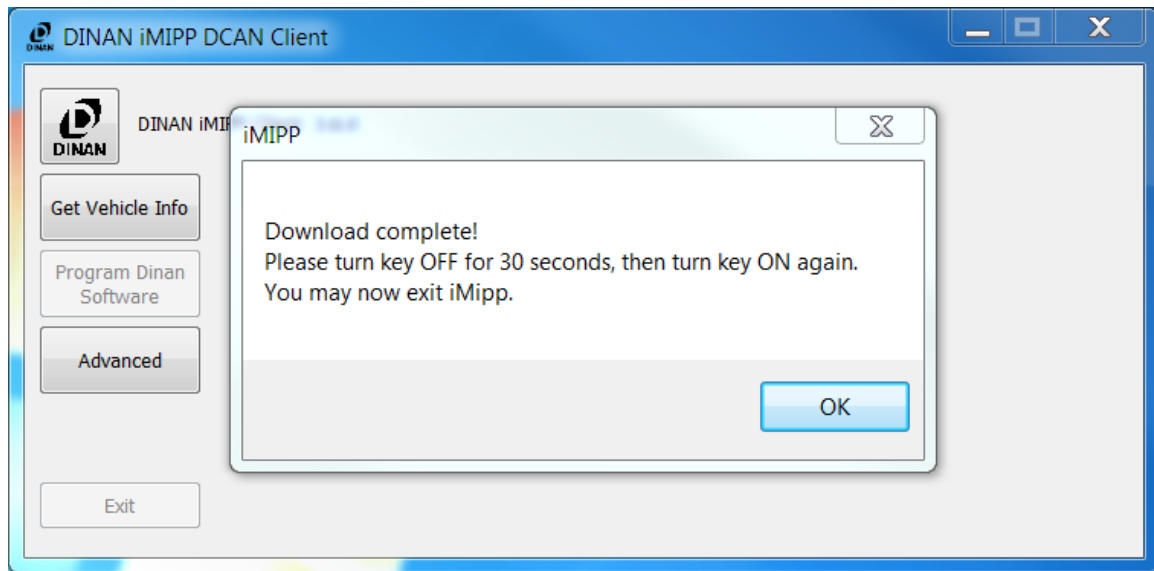
20. The following message will appear after clicking "Get Vehicle Info" if the vehicle's PCU is currently unsupported: "This DME's software is currently unsupported. Please contact DINAN Support." In order to program this vehicle, DINAN needs more information about the vehicle before proceeding. Simply place a call to DINAN Support (800-341-5480) and answer a few questions about the VIN, Programmed Control Unit (PCU), and the Basic Control Unit (BCU) to enable the vehicle's software for programming.



21. Clicking on the "Program DINAN Software" button will prompt you with several windows asking information about the vehicle you're attempting to program. Once these windows have been completed, the prompt shown below will appear as a last minute warning before proceeding with programming the vehicle. Clicking "OK" will begin installing DINAN software on your vehicle, clicking "Cancel" will return you to the main iMIPP window without programming DINAN software.



22. After a vehicle has completed programming, the prompt illustrated below will appear. Follow the displayed instruction and perform this fault-clearing procedure!



23. After clearing faults, click the "OK" button to enable the "Exit" button and the "Get Vehicle Info" button of the iMIPP application.
24. Choose "Get Vehicle Info" and verify that Dinan software appears on the right side of the screen. This confirms that programming was successful.
25. The iMIPP application may now be closed, and the vehicle may be turned off.
26. Happy Motoring!